

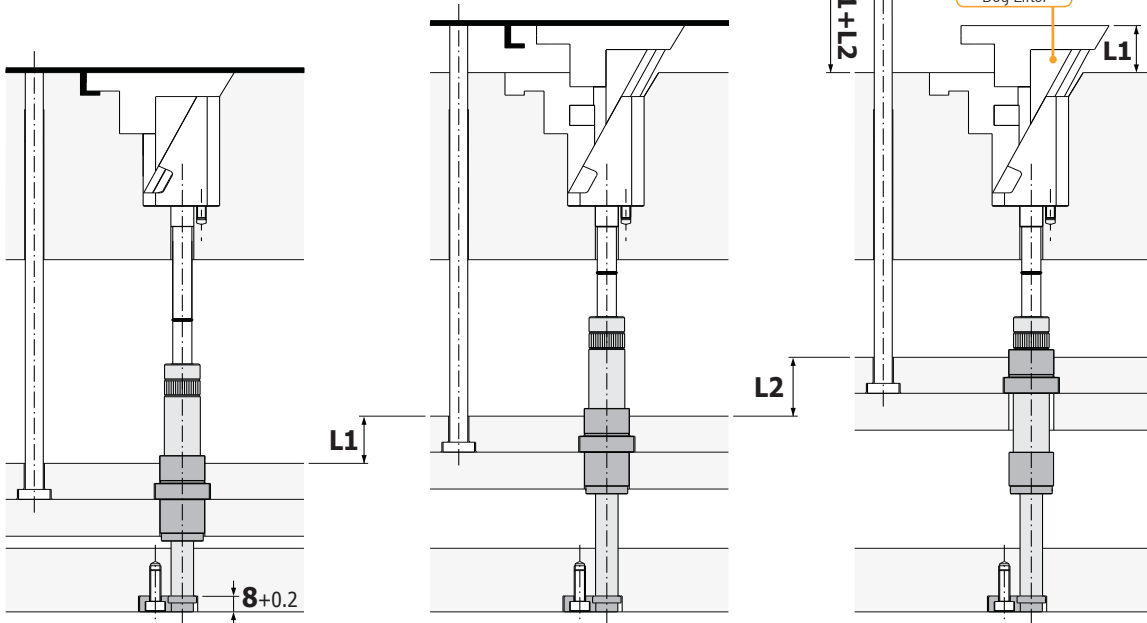
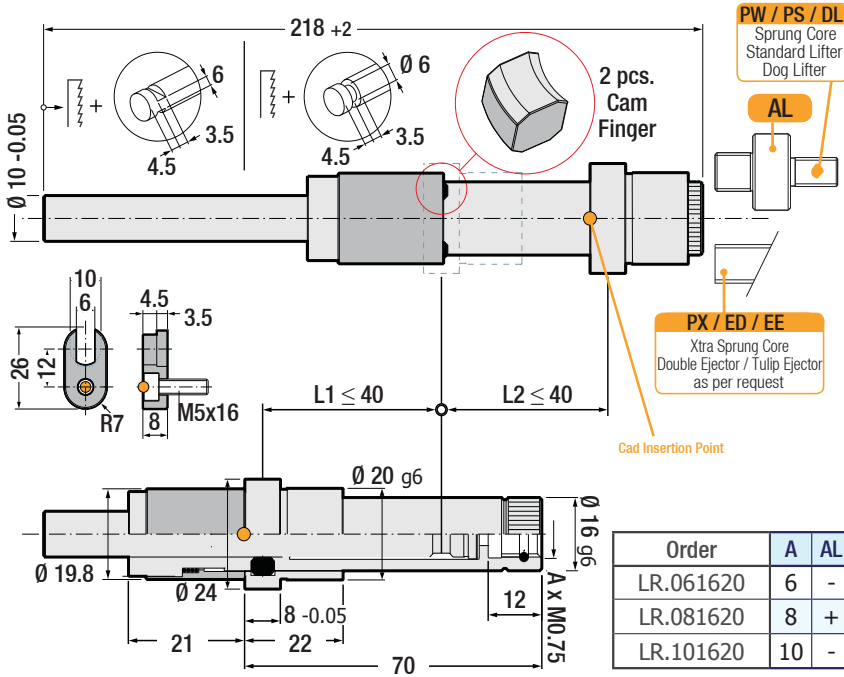


### Threaded Limiter

Code: LR

Threaded Limiter (LR) is mounted and fixed to mould rear mounting / bearing plate (H5 A). Movable bush part of the unit is inserted into the ejector plates. Limits the stroke of a threaded lifter with respect to the ejector stroke. Enables two stage ejection with only one ejector plate. All movements are 90° to the parting line.

Material: 1.7243 Hardness: 58±2 HRC Max. working temperature: 150°



Code: AL

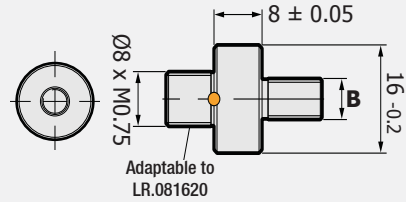
### Threaded Limiter Adapter

Allows the use of the LR for internal threads. It is a dual different threaded adapter providing positioning of LR.

In Addition:

Fine tread part of AL also can be used as joint adapter for PW - Sprung Cores & PS - Standard Lifters.

Material: 1.5065



Code: AL

Order	B
AL.0800M4	M4 x 10
AL.0800M5	M5 x 10
AL.0800M6	M6 x 10
AL.0800M8	M8 x 10

