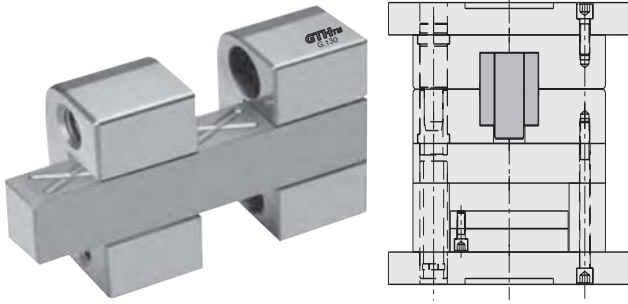


Centring Unit - DLC Coated

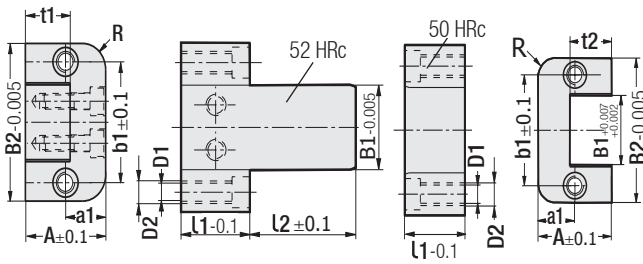
Code: **G131**

This product is suitable for rotational multi component moulds.



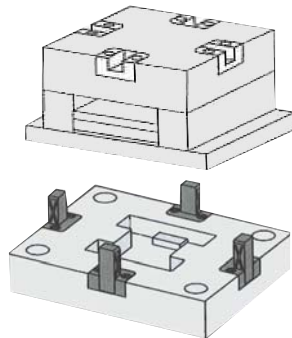
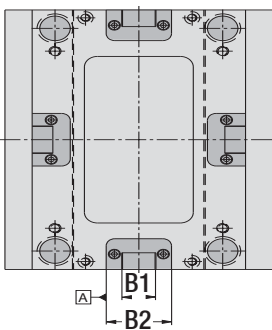
Square Locating - Centring Unit

Code: **G130**



Code: **G130**

B1	l1	l2	A	B2	D1	D2	a1	b1	t1	t2	R
16	20	20	22	45	6.8	M8	11	30	11.5	12	8
		40									
30	26	40	35	60	6.8	M8	17.5	46	19.5	20	10
		63									
48	36	32	46	100	10.3	M12	23	74	25.5	26	12.5
		50									
		63									
77	56	50	60	150	14	M16	30	114	35.5	36	16
		71									
		100									

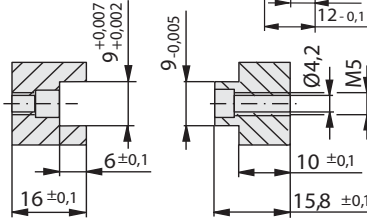


Order: **G130**. B1 x l1 x l2

Material: 1.2510 Hardness: 52 - 54 HRC

G131.1

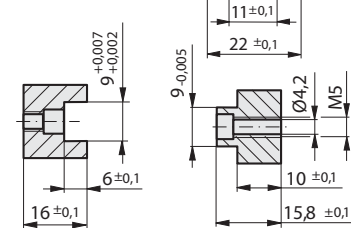
Material: 1.2344
Hardness: 52 - 54 HRC



Order: **G131.1**

G131.2

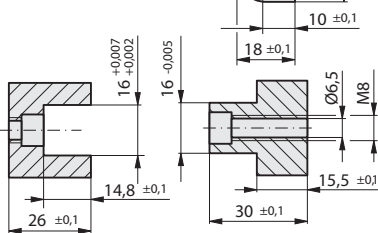
Material: 1.2344
Hardness: 52 - 54 HRC



Order: **G131.2**

G131.3

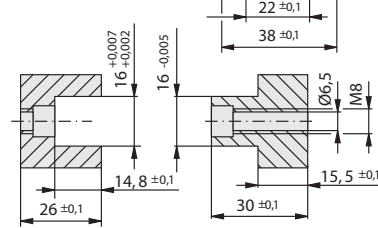
Material: 1.2344
Hardness: 52 - 54 HRC



Order: **G131.3**

G131.4

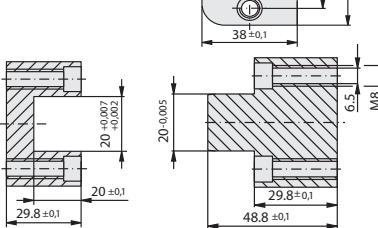
Material: 1.2344
Hardness: 52 - 54 HRC



Order: **G131.4**

G131.5

Material: 1.2344
Hardness: 52 - 54 HRC



Order: **G131.5**