

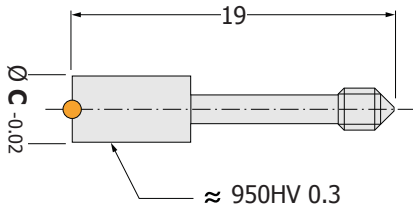


Code: IT

High Temperature Insert for Date Stamp

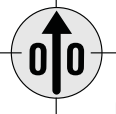
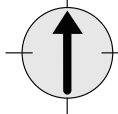
Due to fact that the insert is adjustable / removable from the front of the mould, there is no need to remove the tool from the machine or disassemble the mould.

Material: 1.2344 Nitrided



Arrow only

Year



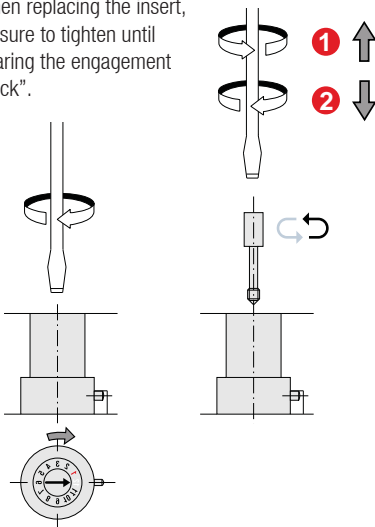
Code: IT

Order Arrow only	Order Year	C
IT.4719SF	IT.4719 ..	4.7
IT.6719SF	IT.6719 ..	6.7

* Please indicate the desired year after the code.

IMPORTANT!

When replacing the insert, be sure to tighten until hearing the engagement "click".

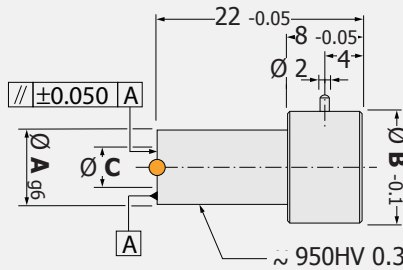


Code: FT

High Temperature Date Stamp

High temperature date stamp. Designed for injection mold tools which operate in high temperature environments, like: Zamak, Zinc, Polyester, Bakelite, etc.. Possibility to change annual insert.

Material: 1.2344 Nitrided + Inconel 2.4669
Max. working temperature: 450°

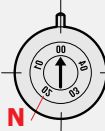
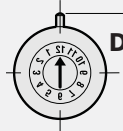


Possibility to change annual insert.

12 Months

12 Months + Year

Year



(Number of years)

Code: FT

Order 12 Months	A	B	C	D	N
FT. 0847SF	8	12	4.7	11	5
FT. 1267SF	12	16	6.7	12	8

Order 12 Months + Year	A	B	C	D	N
FT. 084712	8	12	4.7	11	5
FT. 126712	12	16	6.7	12	8

Order Year	A	B	C	D	N
FT. 084705	8	12	4.7	11	5
FT. 126708	12	16	6.7	12	8

* Please indicate the desired year after the code.

The depth is the engraving on the "FT" Date Stamp:

- FT.08 (Year) : 0.15-0.25mm
- FT.08 (Arrow) : 0.40-0.50mm
- FT.12 (Year) : 0.15-0.25mm
- FT.12 (Arrow) : 0.50-0.60mm

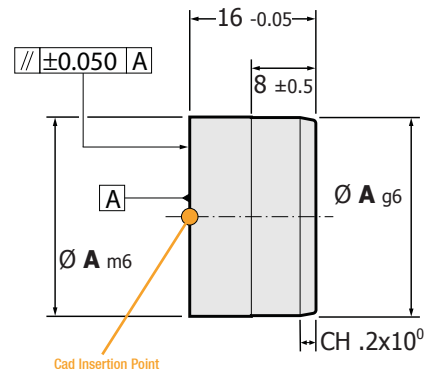


Code: BM

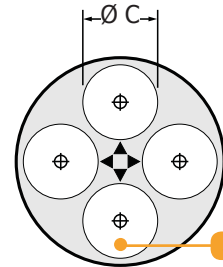
Block Base Insert

Wide range of diameters. Possibility of 3 or 4 information's. Only a H7 pocket required for assembly. No downtime when changing inserts. Guarantee that the insert will be replaced due to internal mechanism.

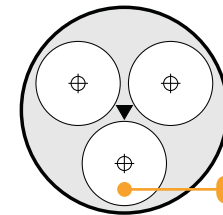
Material: INOX 1.4034
Hardness: 51 ± 3 HRC
Max. working temperature: 150°



Cad Insertion Point



4 x PM



3 x PM

Code: BM

Order	A	C	E	#PM
BM.160603	16	6.5	8	3
BM.180604	18	6.5	8	4
BM.220903	22	8.7	10	3
BM.250904	25	8.7	10	4
BM.281103	28	11.5	12	3
BM.321104	32	11.5	12	4