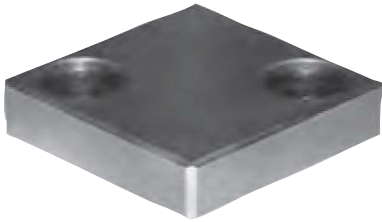
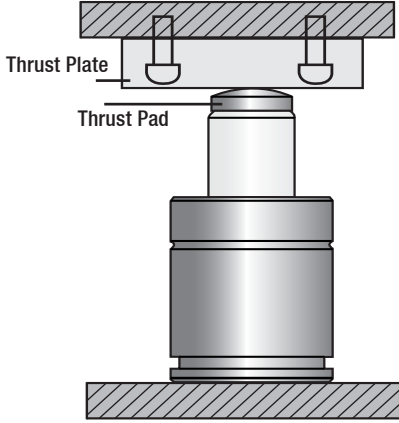


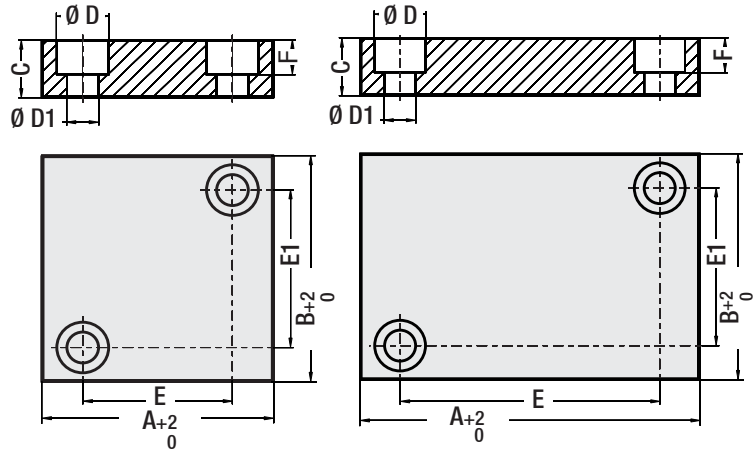
Mounting Example



Thrust Plate for Gas Springs

Code: EP

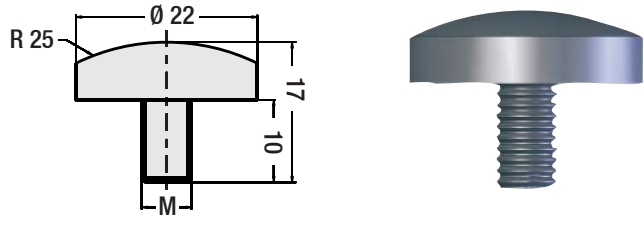
It reduces lateral pressure in cases of declined pressure or laterally replacing parts. The lateral load resistance of the gas springs is increased by using the thrust pads and the thrust plates together. It does that by reducing friction. Even though no thrust pad is used, a thrust plate will be very useful for your system.



Order Code	A mm	B mm	C mm	Ø D	Ø D1	E	E1	F	Gas Spring Code
EP.40	40	40	15	15	9	21	21	10	SN:150-250-500 / Y:300-500 / YO:300-500 / G:40-75-100
EP.56	56	56	20	18	11	32	32	13	SN:750-1500 / Y:700-1000 / YO:700-1000-1500 / G:180
EP.71	71	71	20	18	11	48	48	13	SN:3000-5000 / Y:2400 / YO:2400-4200 / G:470-750
EP.50	50	25	12	11	7	32	8	8	SN:250 / Y:300 / YO:300
EP.55	55	30	12	11	7	40	14	8	SN:500 / Y:500 / YO:500 / G:40-75-100
EP.70	70	35	15	15	9	48	14	10	SN:750 / Y:700 / YO:700
EP.75	75	50	15	15	9	56	30	10	SN:1500 / Y:1000 / YO:1000-1500 / G:180
EP.85	85	60	15	15	9	66	40	10	SN:3000 / Y:2400 / YO:2400 / G:470
EP.100	100	80	20	18	11	72	56	12	SN:5000 / Y:4200 / YO:4200 / G:750
EP.110	110	100	20	18	11	85	45	12	SN:7500-10000 / Y:6600 / YO:6600-11800 / G:1200

Note: We recommend using the thrust pad and the thrust plate combination in gas springs with wide stroke capacity.

Material: CK45
Surface Hardened



Thrust Pad for Gas Springs

Code: HRM

Piston protection head (balancing / straightening)

Order Code	M
HRM.6	M6 x 10
HRM.8	M8 x 10

It is a useful product which protects piston head and absorbs vibrations in the die. The hardened thrust pad reduces lateral pressure in cases of declined pressure or laterally replacing parts. The lateral load resistance of the gas springs is increased by using the thrust pads and the thrust plates together. It does that by reducing friction. Even though no thrust pad is used, a thrust plate will be very useful for your system.