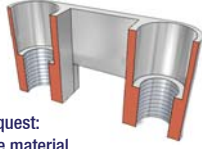


As per request:
Polyamide material

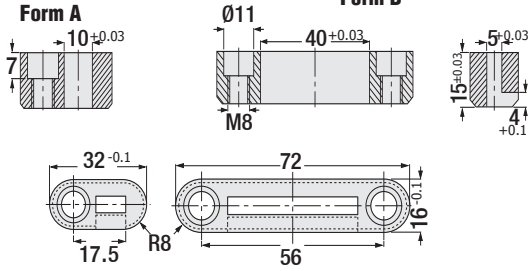


Stamp Retainer

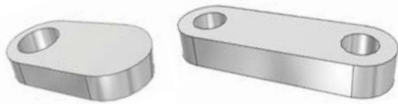
Code: **ZTF**

Reference: FORD / WDX20-70

Material: 1.2379 Hardness: 60 - 62 HRC



Order: **ZTF. Form**

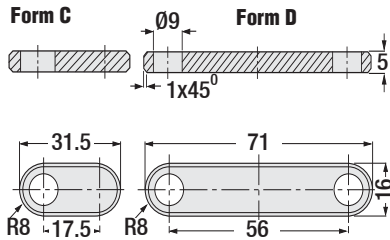


Backing Plate for Stamp Retainer

Code: **MD2**

Reference: FORD / WDX20-70

Material: 1.0503 Hardness: 60 - 62 HRC



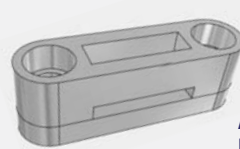
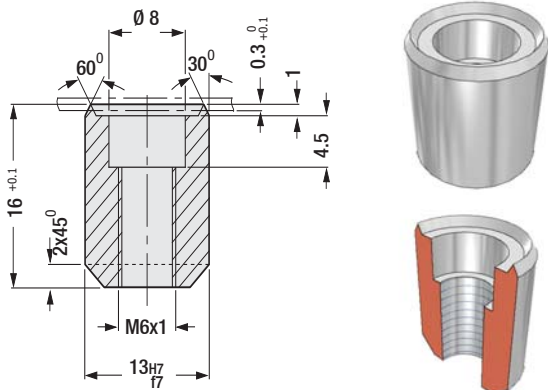
Order: **MD2. Form**

Locating Punch

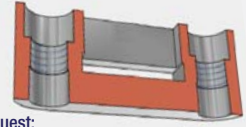
Order Code: **KZF**

Reference: FORD / WDX20-70-0101

Material: 1.2080 Hardness: 60 - 64 HRC



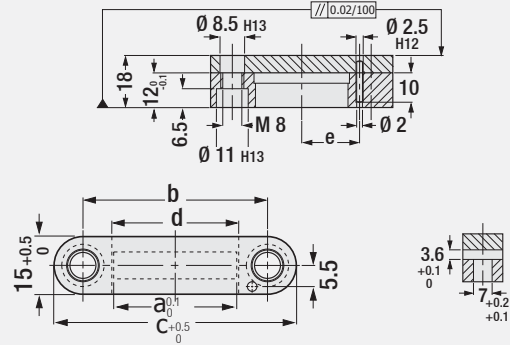
As per request:
Polyamide material



Stamp Retainer

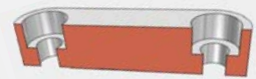
Code: **ZTP**

Reference: PSA E24.64.100.G



Punch pcs.	a	b	c	d	e
4	16	32	47	17	12
6	24	40	55	25	-
8	32	48	63	33	20
10	40	56	71	41	24

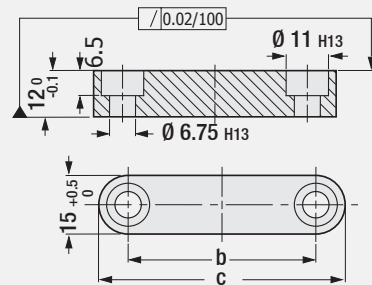
Order: **ZTP. C**



Backing Plate

Code: **ZDP**

Reference: PSA E24.64.100.G



Punch pcs.	b	c
4	32	47
6	40	56
8	48	63
10	56	71

Order: **ZDP. C**