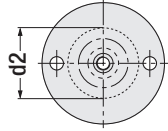
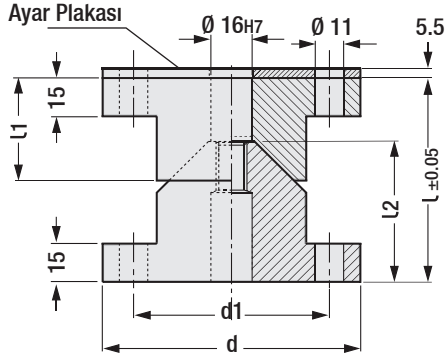
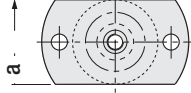




Form - A



Form - B



### Konik Merkezleme Ünitesi

Referans: NAAMS G91

Kod: G 63

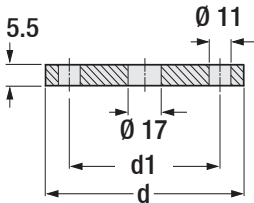
d	l	d1	d2	l1	l2	Form
100	80	76	58	40	55	A
120	90	96	78	50	65	
100	80	76	58	40	55	B
120	90	96	78	50	65	

Ayar Plakaları - 5.5mm standart olarak ünite ile birlikte dir. İsteğe göre Ayar Plakası siparişleriniz için özel üretim yapılabilir.



Sipariş:  
G63. d x Form

Malzeme: 1.7131 (16MnCr5)  
Sertlik: 60 - 64 HRC



### Ayar Plakası

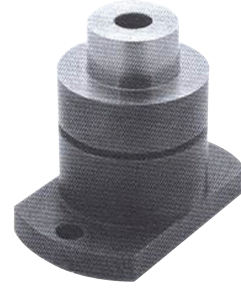
Kod: G 63A

d	d1	a	Form
100	76	-	A
120	96	-	
100	76	58	B
120	96	78	



Sipariş:  
G63A. d x Form

Malzeme: 1.0503 (CK45)



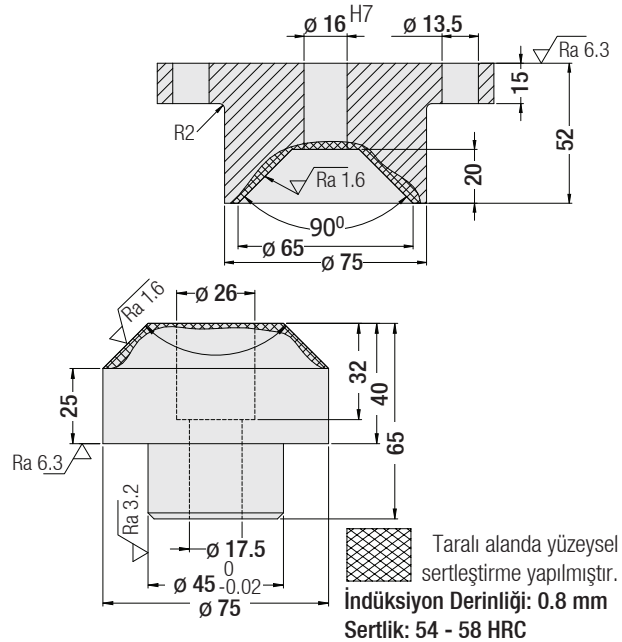
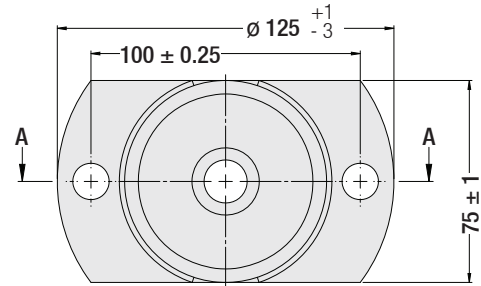
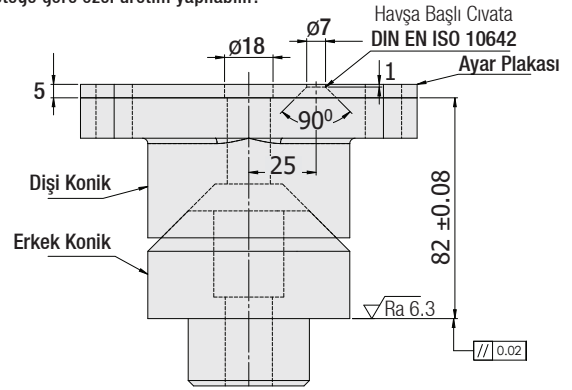
### Konik Kilitleme Stoperi

Kod: G 46

Referans: WDX - 14 - 62 - 0175

Not: Tolerans belirtilmeyen tüm ölçüler EN 22768 - 1 (m) standartlarına göredir.

\* İsteğe göre özel üretim yapılabilir.



Taralı alanda yüzeysel sertleştirme yapılmıştır.  
İndüksiyon Derinliği: 0.8 mm  
Sertlik: 54 - 58 HRC



Sipariş:  
G46

Malzeme / Ayar Plakası: AISI 1018 veya 1.0038  
Konikler: 1.1206 (CK50) veya 1.8159 (50CrV4)