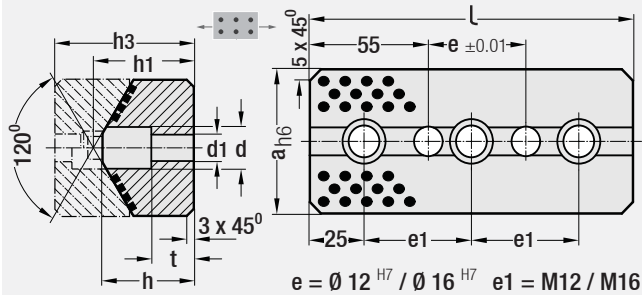


Cam Plate, "V" Guide
Self-Lubricating

Code: **G111**

There is ± 0.12 tolerance between fixing holes and ± 0.10 tolerance between pin holes.



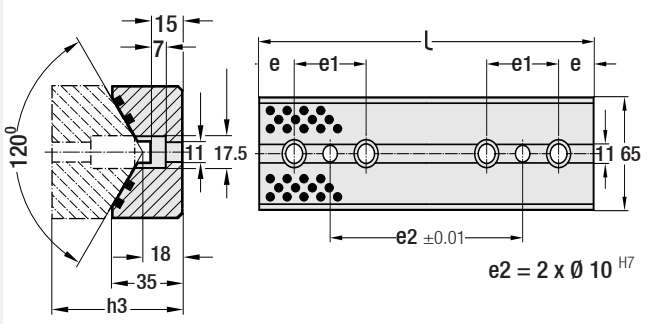
a	l	h1	h	h3	e	e1	d	d1	t	Hole
65	150	47	44	65	45	100	20	13.5	20	2
	95				150					
	145				100	3				
	195				125					
125	150	52	47	85	45	100	26	17.5	15	2
	95				150					
	145				100	3				
	195				125					

Material: Bronze with graphite inserts Order: **G111**. a x l



Cam Plate, "V" Guide
Self-Lubricating

Code: **G139**



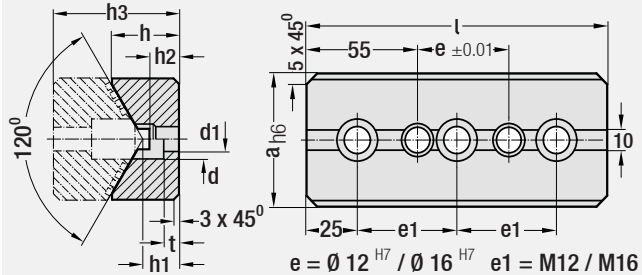
h3	l	e	e1	e2	Hole
65	100	20	60	20	2
	150	25	50	50	3
	200			100	4
	250			150	5
	300			200	6

Material: Bronze with graphite inserts Order: **G139**. h3 x l



Cam Plate, "V" Guide
Steel

Code: **G111C**



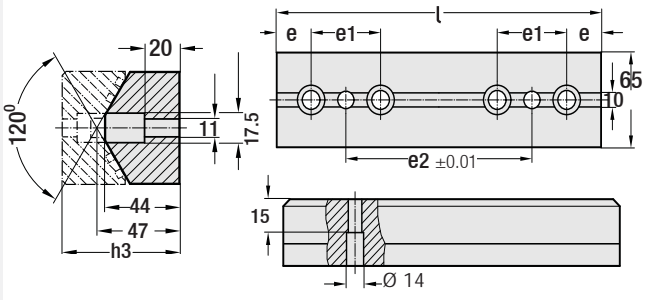
a	l	h1	h	h2	h3	e	e1	d	d1	t	Hole
65	150	18	35	17	65	45	100	20	13.5	8	2
	95					150					
	145					100	3				
	195					125					
125	150	33	60	32	85	45	100	26	17.5	15	2
	95					150					
	145					100	3				
	195					125					

Material: 1.2379 Steel Hardness: 63 - 65 HRC Order: **G111C**. a x l



Cam Plate, "V" Guide
Steel

Code: **G139C**



h3	l	e	e1	e2	Hole
65	100	20	60	20	2
	150	25	50	50	3
	200			100	4
	250			150	5
	300			200	6

Material: 1.2379 Steel Hardness: 63 - 65 HRC Order: **G139C**. h3 x l