

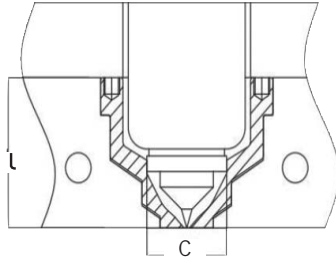
NEW

Runner Bushing Types

How to order:

BY02 (bushing tip) X **C** (nozzle Ø)

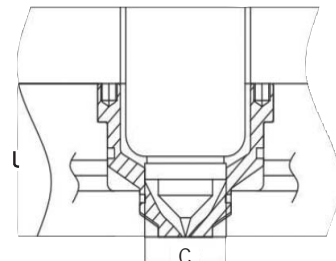
Code	C	L
BY02	15	24
BY02	17	24
BY02	19	24



How to order:

CBY02 (bushing tip) X **C** (nozzle Ø)

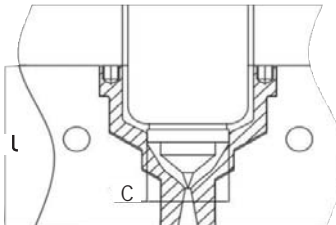
Code	C	L
CBY02	15	24
CBY02	17	24
CBY02	19	24



How to order:

BY03 (bushing tip) X **C** (nozzle Ø)

Code	C	L
BY03	15	32
BY03	17	32
BY03	19	32



Selection Table of Runner Series Nozzle Tip Diameters:

* Values in the table are in gram (g).

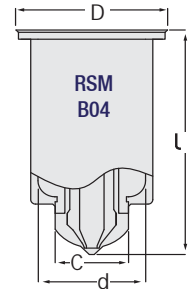
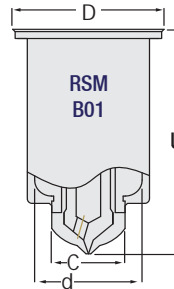
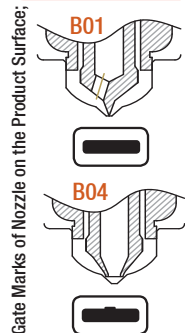
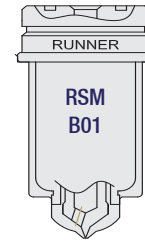
* Refer to page "329" for nozzle selection based on grammage.

* The following table is prepared for our customers for information purposes. Real working conditions; it can differ depending on part volume, average wall thickness, viscosity, machine capacity and gate diameter.

Nozzle Dia.	Density of Raw Material		
	A	B	C
RSM15	60	40	25
RSM17	200	100	60
RSM19	800	500	300

Raw Material Group		
A	B	C
PP	ABS	PC
PE	SAN	PPS
SS	POM	TPE
	PMMA	PUR
	PA	PC - ABS
	PBT	
	PET	

Runner Series Nozzle



How to order:

RSM (code) X **d** (nozzle Ø) X **L** (nozzle length) X **BOX** (nozzle tip type)

Order Code	D	L	C	d	BOX	Heaters Wattage
RSM15	30	49	15	25	Nozzle Tip Types:	250
		59				290
		69				350
		79				400
		89				400
		99				470
RSM17	32	49	17	25	B01	250
		59				290
		69				350
		79				400
		89				470
		99				470
RSM19	34	49	19	27	B04	290
		59				350
		69				400
		79				470
		89				470
		99				620
					M	
					Spinning	



- When ordering, pocket / machining detail will be presented with technical data.

- Wattage of heater depends on the flow characteristics of the material.

Please create your orders with form on page - 336