



Date Stamp

Code: **KT**

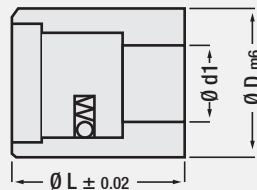
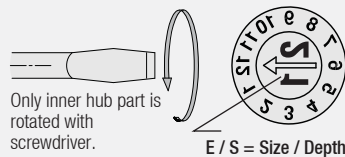
Standard Models

It is suitable to be used in all injection mould systems. Only a hole as product diameter (H7 - Reamed) is sufficient for mounting to mould.

Mounting: Drill a suitable hole in the desired part of mould and place Date Stamp into it (with bronze or rubber hammer). Making a tight hole (not to rotate date stamp) is useful.

A wide range of options are available at affordable prices.

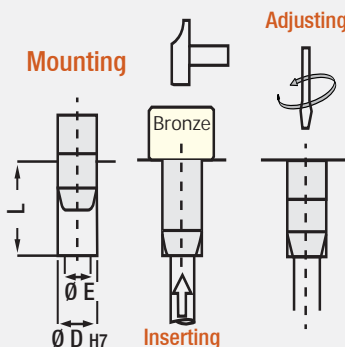
Types	
	Month KT01
	Month + Year KT02
	Year KT03
	Weekly KT04
	Daily KT05
	Shift KT06
	Number (figure) KT07
	Letter from A to M KT08
	Letter from N to Z KT09
	Arrowed (blank) KT10
	Custom-Made KT11



* KT02 & KT04: Pls. specify "year" for your KT02 & KT04 orders.

D	L	d1	S	E
4	6	2	0.2	3.5
4	8	2	0.2	3.5
5	8	2.5	0.2	3.5
6	8	3.5	0.2	4.0
8	10	4.5	0.2	6.0
10	10	4.8	0.2	8.0
12	12	6.0	0.25	10
16	14	7.8	0.35	12
20	14	9.7	0.35	14
25	25	12.7	0.35	16

Order:
KT (type). D x L

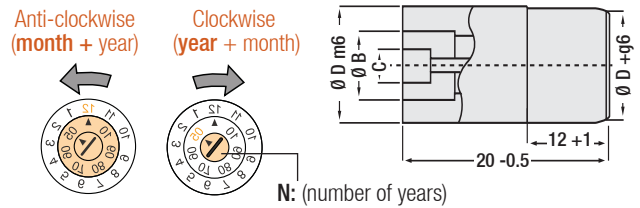


Multi-Date / Double Date Stamp

Code: **DKT**

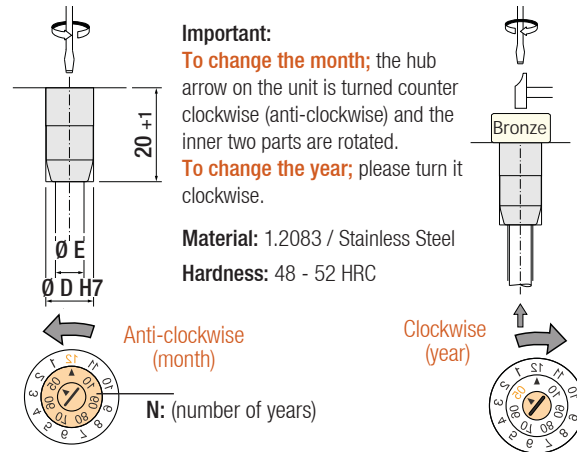
Two different Date Stamps, with a unit as months + years.

This Guvenal product reducing needs and area required for cost and two different Date Stamp, shows two different criteria on one unit. Its standard model is as 12 month + 6 year, in other words is not required any change along 6 years. The length of all Date Stamps are same (20 mm).



Code: **DKT**

Order	D	B	C	E	N
DKT.08	8	5.5	3	6	5
DKT.10	10	6	3	10	6
DKT.12	12	8	4	10	6
DKT.16	16	10.5	5.3	12	10
DKT.20	20	12	6	16	12



Mini Screwdriver Set Date Stamp Adjusting Kit

Order Code: **CRP**



Mini Screwdriver Series:

- 6 pcs. rotary head set;
- + 4 pcs, 1.5 - 2 - 2.5 - 3 head mini screwdriver.
- + 2 pcs, PH0 - PH1 phillips head mini screwdriver.

- * Chrome vanadium steel.
- * Blackened stainless steel.
- * Ergonomic handles.
- * Upper part of handle is rotary head.