

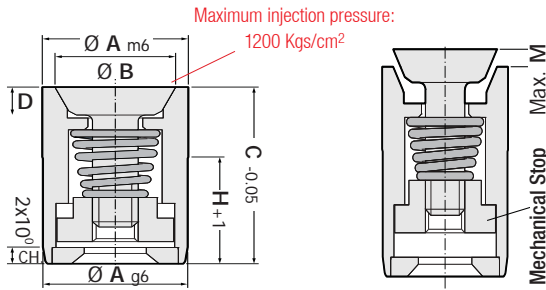


## Air Venting Valve

Code: **CHV**

"CHV" Air Venting Valves produced from stainless steel. It provides high air discharge. Also, the conical ejector rises and helps the product exit from mould. The operating temperature under 150°C is recommended.

**In higher temperature than 150°C; steel starts to expand and melt plastic raw material gets into valve and prevents operation.**



Material: INOX 1.4034

Operating air pressure: 1.5 - 6 Bar

1 BAR ≈ 1 Kg. / cm<sup>2</sup>

Order	A	B	C	D	H	M
CHV.05	5	3	12	1.5	7	2.5
CHV.06	6	5.2	12	1.5	7	0.95
CHV.08	8	6.5	12	1.5	7	0.95
CHV.10	10	8	12	2	7	0.95
CHV.12	12	10	12	2.5	7	0.95
CHV.16	16	13	20	3	12	1.55
CHV.20	20	17	20	3.5	12	1.55

**NEW**

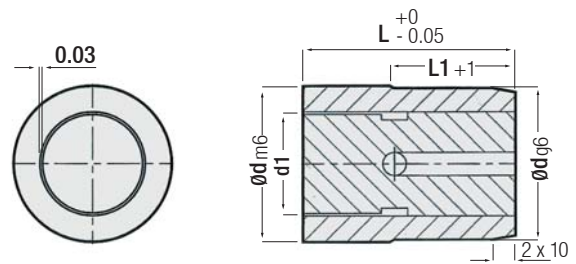


## Double Air Venting Valve

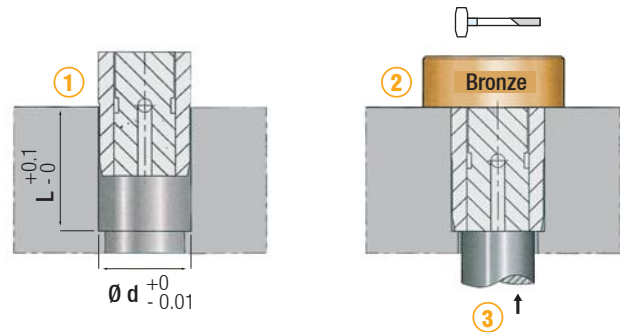
Code: **DHV**

"DHV" Double Air Venting Valves produced from stainless steel. The product is effective for the semi-pneumatic ejection method. It is effective in discharging gas and air trapped in the final filling areas of deep details in the moulds or in other possible areas and it helps the product exit from mould.

**In mounting;** please use the copper or rubber hammer and bronze wedge.



Material: INOX 1.4034



Order	d	d1	L	L1
DHV.08	8	5	12	7
DHV.10	10	6	12	7
DHV.12	12	8	12	7
DHV.16	16	10	20	12

### Mounting Example

