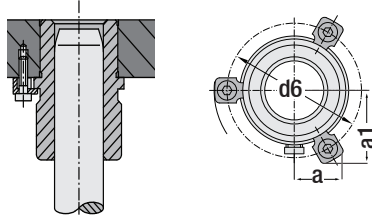
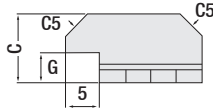
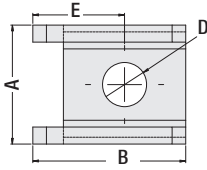


Burç Tutucu

Kod: G101

Grafitli ve diğer burçlar ile kullanılırlar.
 $\emptyset \leq 63$ - 2 adet ve $\emptyset \geq 80$ - 3 adet tutucu kullanılır. Montaj cıvataları ayrıca sipariş edilmelidir.



Kod: G101

\emptyset d Burç	A mm	B mm	C mm	D mm	E mm	G mm	Form
32 / 40							A (M6 x 20)
50 / 63							
63 / 80	17.5	22.5	12	6.5	13.5	6	
100							
115							
32 / 40							B (M8 x 20)
50 / 63							
63 / 80	21	25.5	13.5	8.5	15	5.5	
100							
115							
125							



Sipariş: G101. Form

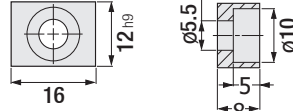
Kama

Kod: G171

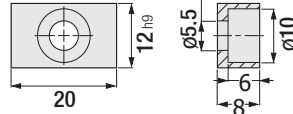
Malzeme:
CK45



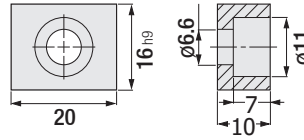
Sipariş Kodu: G171A



Sipariş Kodu: G171B



Sipariş Kodu: G171C

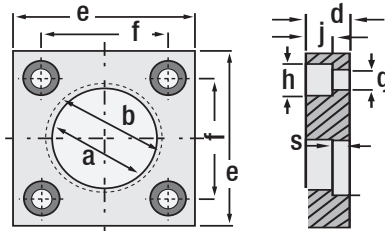
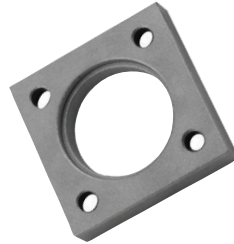


Kolon Tutucu Flaş

Referans: CNOMO
Referans: PSA

Kod: G119

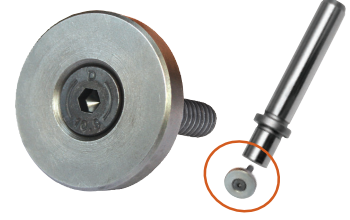
Uyumlu
Kolonlar:
G03
G04
G05



a Kolon	b	d	e	f	g	h	j	s
25	28	10	45	31	6.6	11	7	2.7
32	37	10	56	36	6.6	11	7	4.2
40	45	12	70	50	6.6	11	7	4.2
50	55	14	80	55	9	16	9	4.2
63	70	18	100	70	11	18	11	6.2
80	87	20	110	80	13	22	14	6.2
100	107	20	140	100	13	22	14	6.2



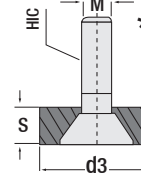
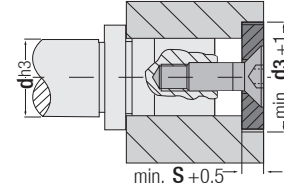
Sipariş: G119. a (kolon)



Kolon Montaj Flaşı

Kod: G110

Kolon Bağlama / Kalıp İçi Destek Elemanı



* Pres kalıplarında ortadan şapkalı kolonların montajında min. d3 + 1 kullanılan güvenli ürün.

* Enj. kalıp itici plakalarının altı için destek elemanı.

\emptyset d3	Kolon Çapı d	Flaş S	Cıvata M
22	\emptyset 15 / 16	5.5 mm	M8 x 20
25	\emptyset 19 / 20		
32	\emptyset 24 / 25	7.5	
40	\emptyset 32 / 30	9.5 mm	
50	\emptyset 38 / 40		
60	\emptyset 48 / 50		
73	\emptyset 60 / 63		
93	\emptyset 80	12	M12 x 20



Sipariş:
G110. d3

Sipariş Örneği:

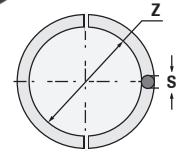
G110.50

Kolon Segmanı

Kod: G112



Uyumlu Kolonlar:
G02 - G03 - G04
G05 - G06 - G07
G09 - G20



Sipariş Kodu	Kolon	z	s
G11225	\emptyset 25	22.5	2.5
G11232	\emptyset 32	28	4
G11240	\emptyset 40	36	4
G11250	\emptyset 50	46	4
G11263	\emptyset 63	57	6
G11280	\emptyset 80	74	6
G112100	\emptyset 100	94	6