

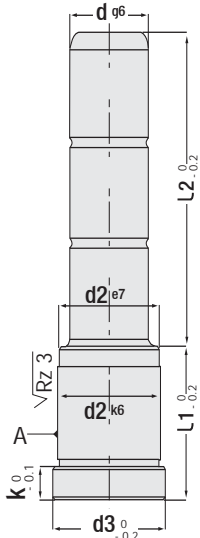


for Turkish Mould Standard



Code: **G12**

Guide Pillar - Shouldered
(with oil groove & without oil groove)



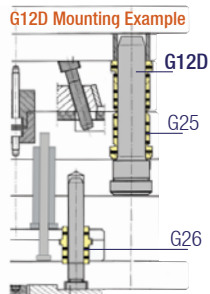
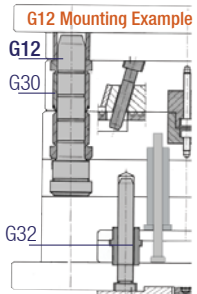
Code: **G12**
(with oil groove)



Code: **G12D**
(without oil groove)
"As per request"



IMPORTANT! Injection Mould: Our guide pillars & bushes cover standard mould systems. But, guide pillar & bushes with different tolerances should be selected for aluminum injection moulds (high temperature / pressure). It should be requested from our company (production with special materials).



Guide Pillar Code: **G12** (with oil groove) Code: **G12D** (without oil groove)

d	l1	l2	d2	d3	k	d	l1	l2	d2	d3	k	d	l1	l2	d2	d3	k			
12	26	26	16	19	4	16	56	26	24	28	6	18	56	26	26	31	6			
		36						56						36						
		46						66						46						
		56						76						56						
12	36	26	16	19	4		16	56	36	24	28		6	18	56	66	26	31	6	
		36							66							66				
		46							76							76				
		56							86							86				
12	46	26	16	19	4		16	56	26	24	28		6		18	56	106	26	31	6
		36							116								116			
		46							126								126			
		56							136								136			
14	26	26	20	25	6	16	66	26	24	28	6	18	66			26	26	31	6	
		36						26								36				
		46						36								46				
		56						46								56				
		66						56						66						
		76						66						76						
14	36	26	20	25	6		16	66	36	24	28		6	18		66	46	26	31	6
		36							36								36			
		46							46						46					
		56							56						56					
		66							66						66					
		86							76						76					
14	46	26	20	25	6	16		66	46	24	28	6	18		66	86	26	31	6	
		36							86							86				
		46							96							96				
		56							106							106				
		66							116							116				
		76							126							126				
14	56	26	20	25	6		16	66	56	24	28	6		18	66	106	26	31	6	
		36							106							106				
		46							116							116				
		56							126							126				
		66							136							136				
		86							146							146				
16	26	26	24	28	6	18		26	26	26	31	6	20		36	26	28	32	6	
		36							26							36				
		46							36							46				
		56							46							56				
		66							56							66				
		76							66							76				
16	36	26	24	28	6		18	36	36	26	31	6		20	46	46	28	32	6	
		36							36							36				
		46							46							46				
		56							56							56				
		66							66							66				
		86							76							76				
16	46	26	24	28	6	18		46	46	26	31	6	20		56	56	28	32	6	
		36							56							56				
		46							66							66				
		56							76							76				
		66							86							86				
		76							96							96				
16	56	26	24	28	6		18	56	56	26	31	6		20	66	66	28	32	6	
		36							66							66				
		46							76							76				
		56							86							86				
		66							96							96				
		86							106							106				
16	66	26	24	28	6	18		66	66	26	31	6	20		76	76	28	32	6	
		36							76							76				
		46							86							86				
		56							96							96				
		66							106							106				
		86							116							116				

To be continued on the next page



Order: **G12. d x l1 x l2**
(G12D = without oil groove)

Material: $\varnothing 20 = 1.7131$
> $\varnothing 20 = 1.1213 (Cf53)$
Hardness: 58 - 62 HRC

GTH guide pillars are polished with surface polishing machine at final stage of production (after grinding).

Guide Pillar - Shouldered



Code: G12 (with oil groove)

Code: G12D (without oil groove)

d	l1	l2	d2	d3	k
20	66	26	28	32	6
		36			
		46			
		56			
		66			
		76			
		96			
116					
20	76	26	28	32	6
		36			
		46			
		56			
		66			
		76			
		86			
106					
126					
20	86	26	28	32	6
		36			
		46			
		56			
		66			
		76			
		86			
106					
126					
20	96	26	28	32	6
		36			
		46			
		56			
		66			
		76			
		86			
106					
126					
25	26	36	34	38	8
		46			
		56			
		66			
		76			
		96			
		25			
36					
46					
56					
66					
76					
86					
106					
25	46	26	34	38	8
		36			
		46			
		56			
		66			
		76			
		96			
116					
25	56	26	34	38	8
		36			
		46			
		56			

d	l1	l2	d2	d3	k
25	56	56	34	38	8
		66			
		76			
		96			
		116			
25	66	26	34	38	8
		36			
		46			
		56			
		66			
		76			
		86			
106					
126					
25	76	26	34	38	8
		36			
		46			
		56			
		66			
		76			
		86			
106					
126					
25	86	36	34	38	8
		46			
		56			
		66			
		76			
		86			
		96			
116					
136					
25	96	36	34	38	8
		46			
		56			
		66			
		76			
		86			
		96			
116					
136					
25	106	36	34	38	8
		46			
		56			
		66			
		76			
		86			
		96			
116					
136					
30	36	36	39	43	10
		46			
		56			
		66			
		76			
		86			
		106			
30	46	36	39	43	10
		46			
		56			
		66			

d	l1	l2	d2	d3	k
30	46	66	39	43	10
		76			
		96			
		116			
		136			
30	56	36	39	43	10
		46			
		56			
		66			
		76			
		86			
		106			
126					
30	66	36	39	43	10
		46			
		56			
		66			
		76			
		86			
		96			
116					
136					
30	76	36	39	43	10
		46			
		56			
		66			
		76			
		86			
		96			
116					
136					
30	86	36	39	43	10
		46			
		56			
		66			
		76			
		86			
		96			
116					
136					
30	96	36	39	43	10
		46			
		56			
		66			
		76			
		86			
		96			
116					
136					
30	106	36	39	43	10
		46			
		56			
		66			
		76			
		86			
		96			
116					
136					
30	116	36	39	43	10
		46			
		56			
		66			
40	56	56	54	58	10
		66			
		76			
		86			

d	l1	l2	d2	d3	k
40	56	126	54	58	10
		156			
		186			
40	66	66	54	58	10
		96			
		116			
		136			
		166			
196					
40	76	76	54	58	10
		106			
		126			
		146			
		166			
196					
216					
40	86	86	54	58	10
		126			
		146			
		176			
		206			
226					
40	96	96	54	58	10
		136			
		156			
		186			
		216			
236					
40	106	106	54	58	10
		126			
		156			
		186			
		226			
246					
40	116	116	54	58	10
		136			
		166			
		196			
		236			
256					
40	126	126	54	58	10
		166			
		196			
		236			
		266			
40	136	136	54	58	10
		196			
		226			
		266			

Order : G12. d x l1 x l2
(G12D = without oil groove)

Material: $\varnothing 20 = 1.7131$
> $\varnothing 20 = 1.1213 (Cf53)</math>
Hardness: 58 - 62 HRC$

To be continued on the previous page