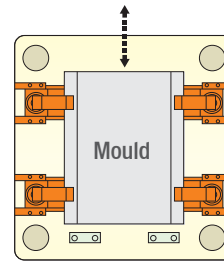
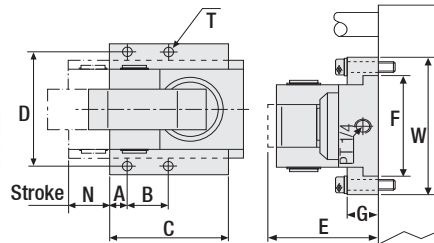


Hydraulic Clamp "CD"

Code: 1015-CD



Type		CD02	CD04	CD06	CD10	CD16	CD25
Capacity of Clamp	Ton	2	4	6	10	16	25
Total Stroke (X)	mm	8	8	8	8	8	8
Stroke of Clamp (Y)	mm	3	3	3	3	3	3
Preserved Stroke (Z)	mm	5	5	5	5	5	5
Total Volume of Cylinder	cc	7.5	13	21	38	55	98

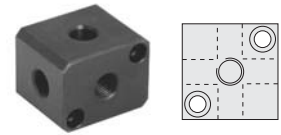
Hydraulic Pressure: 250 Kgf / cm²

- It can be used in machines with holes on the plate.

Standard Temperature: 60⁰
Optional Temperature: 160⁰

Order Code	A	B	C	D	E Min.	F	G	W	N Max.	T
1015-CD02	12	20	80	98	90	76	30	124	124	M10 x 20D
1015-CD04	12	25	100	109	93	87	30	135	135	M12 x 24D
1015-CD06	15	30	120	126	109	104	30	152	152	M12 x 24D
1015-CD10	15	35	150	148	131	124	36	174	174	M14 x 28D
1015-CD16	20	40	200	166	142	138	44	200	200	M18 x 36D
1015-CD25	20	45	235	200	163	168	48	240	240	M22 x 45D

Tube Connector / Order Code: 1036BT



Rotary Joint / Order Code: 1036DE



Clamp Bracket / Order Code: 1036CA



Clamp Bracket / Order Code: 1036CB

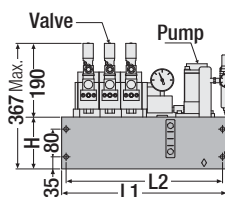


Accessories for Quick Die & Mould Change System



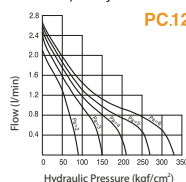
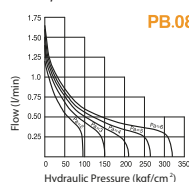
Air Powered Hydraulic Pump Unit

Code: 1040-PB & 1040-PC



Order Code	L1	L2
PB.0801P1V	250	225
PB.0801P2V	310	285
PB.0801P3V	428	403
PB.0801P4V	487	462
PC.1201P3V	-	397

- The Hydraulic Pump is driven by air. Once the hydraulic pressure reaches the pressure setting, it stops pumping which is energy saving.
- The circuit control system is designed with the function of checking and avoiding oil leakage. If pneumatic pressure out, the hydraulic pressure still maintains.
- It is suggested to adopt pump code: 1040-PC1201P3V when used with Hydraulic Clamp type CA16-CB16 or CA25-CB25.
- With pressure control valve. - Capacity 400 bar max.



Electrical Hydraulic Pump Unit

Code: 1040-VD

- It is suitable for direct connection system.
- Please specify flow speed (l/min.) before ordering.

Order Code	Valve	Flow		Bar
		(l/min)	(l/min)	
1040-1P1VD	1	6	14	150
1040-1P2VD	2	6	14	150
1040-1P3VD	3	6	14	150
1040-1P4VD	4	6	14	150

Control Unit



Order Code	Circuit
1041-QDC1	1
1041-QDC2	2
1041-QDC3	3
1041-QDC4	4

Hydraulic Hand Pump

Order Code: 1040-PB0101



Air Powered Hydraulic Pump Unit

Code: 1040-V

- It is suitable for quick coupling system.
- Please specify flow speed (l/min.) before ordering.

Order Code	Valve	Flow		Bar
		(l/min)	(l/min)	
1040-1P1V	1	6	14	150
1040-1P2V	2	6	14	150
1040-1P3V	3	6	14	150
1040-1P4V	4	6	14	150



Modular Quick Coupling

Order Code: 1042-02

- Provides distribution between units in hydraulic system installation.

