



Centring Pin

VW / AUDI
Ref.: 39V 1205

Code: **G65**

BMW
Ref.: B2 4068 2



Centring Pin

Mercedes-Benz Standard
Ref.: B8 0602 321 008 801

Code: **G62**

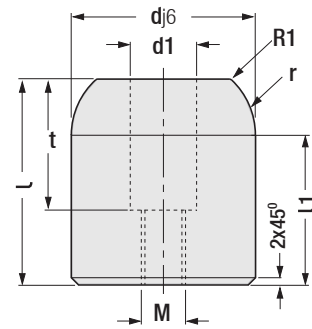
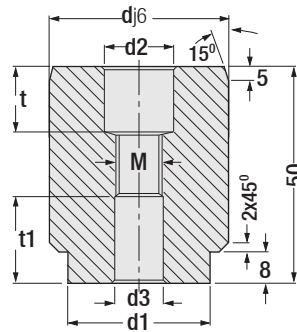
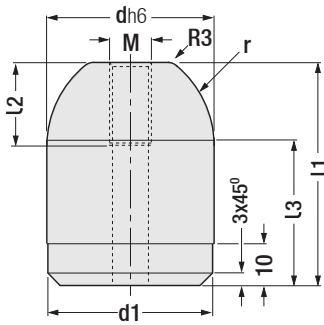


Centring Pin

FCA
Ref.: STQ.40015

Code: **G66**

Centring Pins: It is used for centring of perforated parts. Using centring pin provides centring repeatedly with high sensitivity at dies and fixtures. Mounted parts are centered with high sensitivity and quickly. Screws used for mounting of products should be provided by user.



Code: **G65**

| d | l1 | l2 | l3 | d1 | M | r |
|----|----|----|----|-------|-----|----|
| 22 | 45 | 16 | 35 | 21.95 | M8 | 15 |
| 22 | 55 | 16 | 45 | 21.95 | M8 | 15 |
| 32 | 50 | 20 | 35 | 31.95 | M10 | 20 |
| 40 | 55 | 20 | 35 | 39.95 | M10 | 25 |
| 40 | 65 | 20 | 45 | 39.95 | M10 | 25 |
| 50 | 55 | 20 | 35 | 49.95 | M10 | 25 |

Code: **G62**

| d | d1 | d2 | d3 | M | t | t1 |
|----|----|----|----|-----|----|----|
| 22 | 16 | 11 | 9 | M8 | 13 | 16 |
| 25 | 18 | 11 | 9 | M8 | 13 | 16 |
| 32 | 25 | 11 | 9 | M8 | 13 | 16 |
| 40 | 32 | 15 | 11 | M10 | 16 | 20 |
| 50 | 42 | 15 | 11 | M10 | 16 | 20 |

Code: **G66**

| d | l | l1 | d1 | t | M | r |
|----|----|------|----|----|-----|----|
| 22 | 45 | 37.5 | 14 | 25 | M10 | 20 |
| 32 | 50 | 40 | 18 | 35 | M12 | 20 |
| 40 | 55 | 40 | 18 | 35 | M12 | 20 |
| 50 | 55 | 40 | 18 | 35 | M12 | 20 |



Order: **G66. d**



Order: **G62. d**



Order: **G65. d x l1**

Material: 1.7131 (16MnCr5)
Hardness: 58 - 62 HRC

All dimensions without tolerance are in EN 22768 - 1 (m) standards.

