



Order: **HCC. (zone qty)**

Hot Runner Temperature Controller

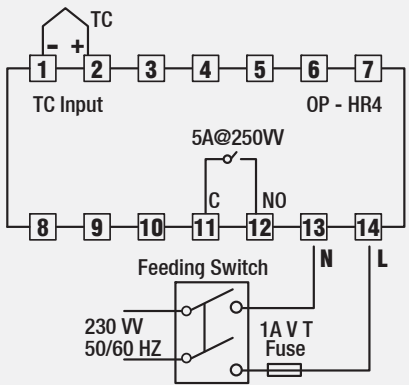
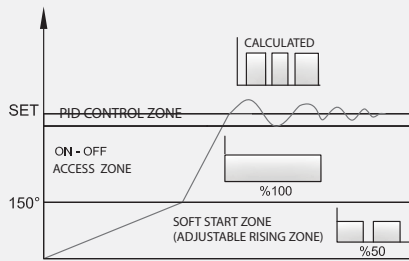
Code: **HCC**

"HCC" Hot Runner Temperature Controllers have been produced from microprocessor-based devices and specially designed for Hot Runners.

Specifications:

- * 1.0⁰ controlling accuracy.
- * PID Control System.
- * Soft Start Mode (working system increases resistance mode up to 8 times with soft start mode).
- * Standby Mode; provides electricity saving.
- * Proportional working mode (without thermocouple).
- * Compatible with "J Type Thermocouple".
- * 0-600 degree operation scale.
- * Structure not requiring calibration / ability to restore factory calibration settings.
- * Automatic parameter settings with Auto Tuning.
- * Warning alarm output for over and under values.
- * 25A Solid State Relay (ssr) output for each channel.
- * Siemens 10A rapid fuse for each channel.
- * With standard 3-meter connecting cable.
- * 4-meter power cable with 5-unit feeder plug.
- * Stranded and specially alloyed thermocouple cable in cable line (Fe-Const).
- * It provides easy installation and use thanks to its "plug and go" structure.

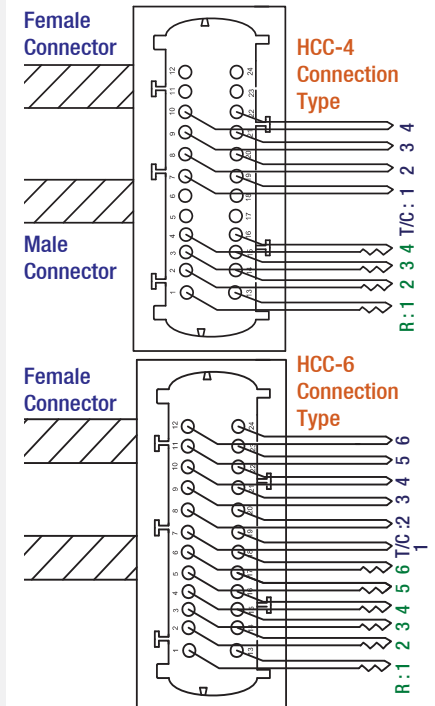
Temperature Control Technique:



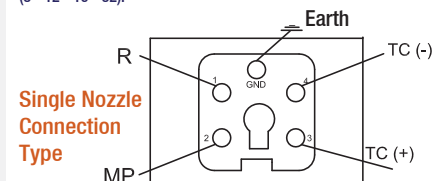
"HCC" Operation Procedure:

Before operating, make connection of heater and thermocouple in accordance with socket connection diagram given to you. After ensuring that socket connection is applied in accordance with the diagram, insert connecting cable into sockets on mould. Before giving energy to controller, switch rear fuses to off position, set pacco switch to zero position, plug power plug into appropriate socket and set pacco switch to position-1, then open the fuses in order, make sure that the temperature in zones opened its fuses is increased. By entering program menu, you can adjust the desired temperature values.

Example: Cable / Plug Connection Series



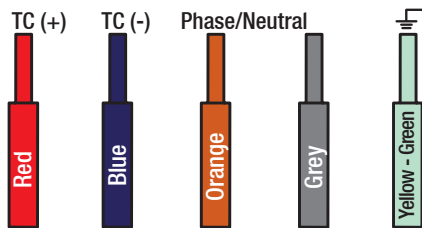
* For other connection types, pls. request info from our company (8 - 12 - 16 - 32).



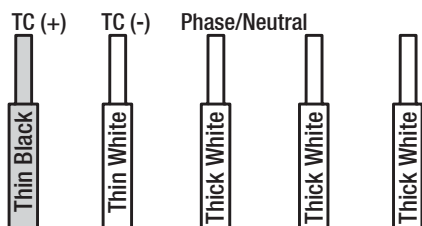
Cable Selection and its Importance:

The device / controller and cables used here are very important in terms of mould, the colors that are used are also important. It should be inserted to the device / controller by considering these colours.

Heaters Cable Connection of Nozzles:

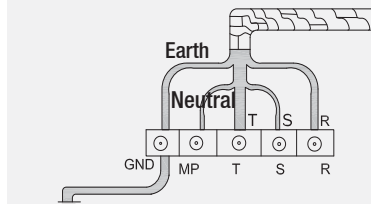


Heaters Cable Connection of Manifold:



Warnings (things to do before operation):

Before fastening "HCC" Controller to the mould, ensure that the network is grounded and your mould is connected to the earth connection. Electrical leakages which may occur in heaters in mould due to that there is no earth connection may pose risk for human health. Also, this leakage will damage the heater and thermocouple. The occurring leakages can be misread of temperature value or damage the device by transferring via thermocouple cable.



Attention!! Neutral (N) and Earth (GND) are different than each other. Due to current switching from neutral line, please do not use this line for earthing. In order not to pose risk for human health and to operate your device normally, the earth terminal at power cable absolutely should be connected to actual earth line in your mains.