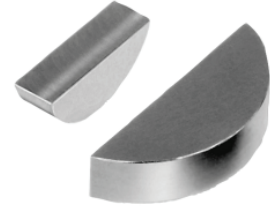


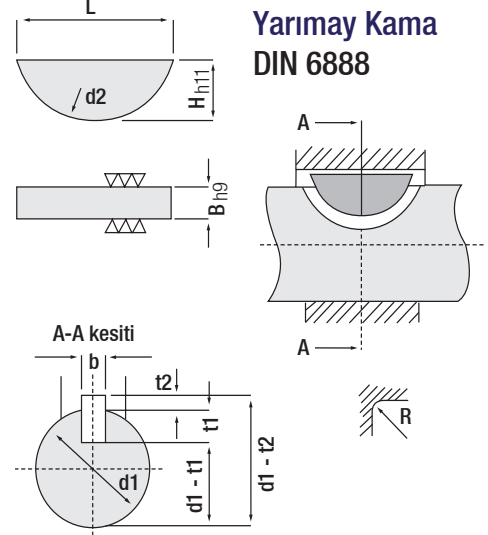
Yarımay Kama DIN 6888

Kod: GAK

Malzeme: CK45 Yüzey Pürüzlülüğü: Ra 0.36 - Rt. 2.6 Çekme Dayanımı (N / mm²): 850
Akma Dayanımı (N / mm²): 750



Sipariş Kodu	B (mm)	H (mm)	L (mm)	d2 (mm)	d1		R	
					min.	max.	min.	max.
GAK.03050	3	5	12.65	13	8	10	0.16	0.25
GAK.04050	4	5			10	12		
GAK.03065	3	6.5	15.72	16	8	10		
GAK.04065	4	6.5			10	12		
GAK.05065	5	6.5			12	17		
GAK.04075	4	7.5	18.57	19	10	12		
GAK.05075	5	7.5			12	17		
GAK.06075	6	7.5			17	22		
GAK.05090	5	9	21.63	22	12	17		
GAK.06090	6	9			17	22		
GAK.08090	8	9			22	30		
GAK.06110	6	11	27.35	28	17	22		
GAK.08110	8	11			22	30		
GAK.10110	10	11			30	38		



TEKNİK BİLGİ !

Kama Yeri Açma Ölçüleri

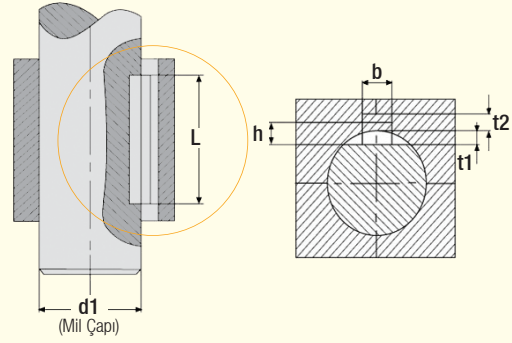
DIN 6885

- Veriler bilgi amaçlı belirtilmiştir.
- Tüm ölçüler mm'dir.
- Boy basamakları: 6, 8, 10, 12, 14, 15, 16, 18, 20, 22, 24, 25, 26, 28, 30, 32, 35, 36, 40, 45, 50, 55, 56, 60, 63, 65, 70, 75, 80, 85, 90, 100, 110, 120, 125, 140, 160, 180 ve 200.

- Toleranslar:

- Mil yuvası; sıkı geçme P9 / boşluklu geçme N9
- Göbek yuvası; sıkı geçme P9 / boşluklu geçme N9

Mil Çapı min. max. > - ≤	b x h	t1	t2	Tolerans		Kama Boyu (L)	
				t1	t2	min. - max.	
8 - 10	3 x 3	1.8	1.4			6 - 36	
10 - 12	4 x 4	2.5	1.8	+0.1 0	+0.1 0	8 - 45	
12 - 17	5 x 5	3	2.3			10 - 56	
17 - 22	6 x 6	3.5	2.8			14 - 70	
22 - 30	8 x 7	4	3.3	+0.2 0	+0.2 0	18 - 90	
30 - 38	10 x 8	5				22 - 110	
38 - 44	12 x 8	5.5	3.8			28 - 140	
44 - 50	14 x 9	5.5	3.8			36 - 160	



DIN 6888	b	t1		t2		R2		d1 (> - ≤)	
b	Tolerans	t1	Tolerans	t2	Tolerans	min.	max.	Seri 1	Seri 2
1	+0.012 -0.012	1	+0.01 0	0.6	+0.01 0	0.16	0.08	3 - 4	3 - 4
1.5		2		0.8				4 - 5	4 - 6
2		1.8		1				5 - 6	6 - 8
		2.9		1				6 - 7	8 - 10
2.5	2.7	1.2	7 - 8	10 - 12					
	3.8	1.4	8 - 10	12 - 15					
3	5.3	1.5	10 - 12	15 - 18					
	5	1.8	12 - 14	18 - 20					
4	6	2.3	14 - 16	20 - 22					
	4.5	2.8	16 - 18	22 - 25					
5	5.5	3.3	18 - 20	25 - 28					
	7	3.3	20 - 22	28 - 32					
6	6.5	3.3	22 - 25	32 - 36					
	7	3.3	25 - 28	36 - 40					
8	+0.018 -0.018	8	+0.02 0	28 - 32	0.40	0.25	32 - 36	> 40	
10		10		32 - 36			-		

