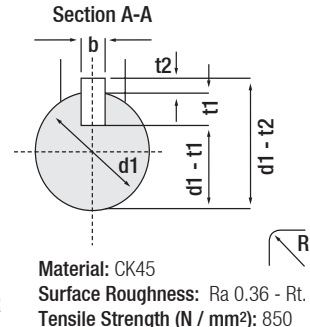
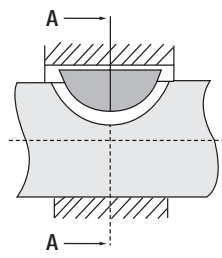
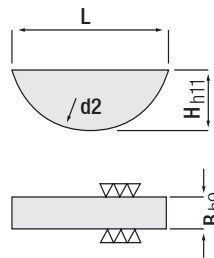
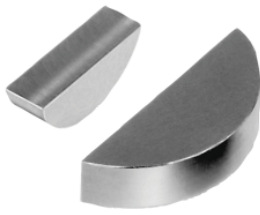


Woodruff Key DIN 6888

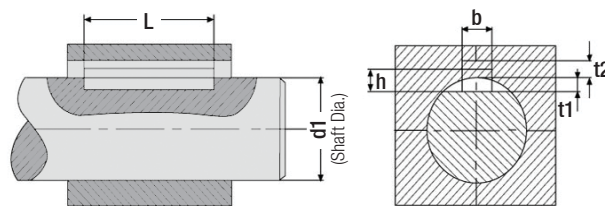
Code: **GAK**



Material: CK45
 Surface Roughness: Ra 0.36 - Rt. 2.6
 Tensile Strength (N / mm²): 850
 Yield Strength (N / mm²): 750

Order Code	B (mm)	H (mm)	L (mm)	d2 (mm)	d1		R							
					min.	max.	min.	max.						
GAK.03050	3	5	12.65	13	8	10	0.16	0.25						
GAK.04050	4	5			10	12								
GAK.03065	3	6.5			8	10								
GAK.04065	4	6.5	15.72	16	10	12			0.25	0.40				
GAK.05065	5	6.5			12	17								
GAK.04075	4	7.5			10	12								
GAK.05075	5	7.5	18.57	19	12	17	0.25	0.40						
GAK.06075	6	7.5			17	22								
GAK.05090	5	9			12	17								
GAK.06090	6	9	21.63	22	17	22					0.25	0.40		
GAK.08090	8	9			22	30								
GAK.06110	6	11			17	22								
GAK.08110	8	11	27.35	28	22	30							0.25	0.40
GAK.10110	10	11			30	38								

Key Slot Dimensions



DIN 6885

Shaft Dia. / min. max. (> - ≤)	b x h	t1	t2	Tolerance		Key Length (L)
				t1	t2	min. - max.
8 - 10	3 x 3	1.8	1.4	+0.1 0	+0.1 0	6 - 36
10 - 12	4 x 4	2.5	1.8			8 - 45
12 - 17	5 x 5	3	2.3			10 - 56
17 - 22	6 x 6	3.5	2.8			14 - 70
22 - 30	8 x 7	4	3.3	+0.2 0	+0.2 0	18 - 90
30 - 38	10 x 8	5				22 - 110
38 - 44	12 x 8					28 - 140
44 - 50	14 x 9	5.5	3.8			36 - 160

- The data are specified for informational purposes only.
 - All dimensions are in mm.
 - Length steps: 6, 8, 10, 12, 14, 15, 16, 18, 20, 22, 24, 25, 26, 28, 30, 32, 35, 36, 40, 45, 50, 55, 56, 60, 63, 65, 70, 75, 80, 85, 90, 100, 110, 120, 125, 140, 160, 180 and 200.
- Tolerances:
 Shaft slot; interference fit P9 / clearance fit N9
 Hole slot; interference fit P9 / clearance fit N9

DIN 6888

b		t1		t2		R2		d1	
b	Tolerance	t1	Tolerance	t2	Tolerance	min.	max.	Series 1 (> - ≤)	Series 2 (> - ≤)
1	+0.012 -0.012	1	+0.01 0	0.6	+0.01 0	0.16	0.08	3 - 4	3 - 4
1.5		2		0.8				4 - 5	4 - 6
2		1.8		1				5 - 6	6 - 8
		2.9		1				6 - 7	8 - 10
2.5		2.7		1.2				7 - 8	10 - 12
		3.8		1.4				8 - 10	12 - 15
3	5.3	1.5	10 - 12	15 - 18					
	5	1.8	12 - 14	18 - 20					
	6	2.3	14 - 16	20 - 22					
4	+0.015 -0.015	4.5	+0.2 0	2.3	0.25	0.16	16 - 18	22 - 25	
		5.5					18 - 20	25 - 28	
		7					20 - 22	28 - 32	
5	+0.015 -0.015	6.5	+0.3 0	2.8	+0.02 0	0.25	22 - 25	32 - 36	
		7					25 - 28	36 - 40	
		8					28 - 32	> 40	
6	+0.018 -0.018	8	+0.3 0	3.3	+0.02 0	0.40	28 - 32	> 40	
10		32 - 36					-		