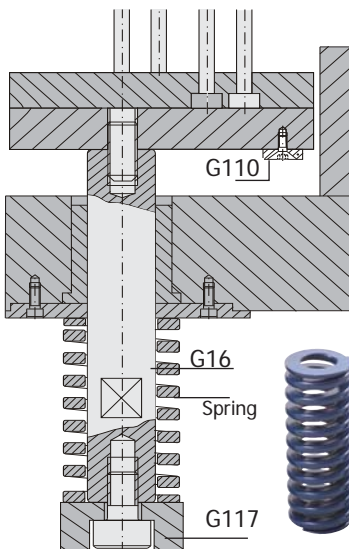
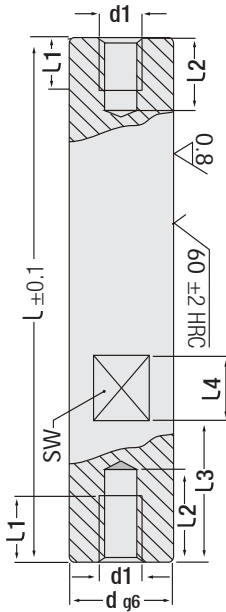




Ejector Rod

Code: G16



Order: G16. d x l

Material: $\varnothing 20 = 1.7131$
> $\varnothing 20 = 1.1213 (Cf53)</math>
Hardness: 58 - 62 HRC$

Ejector Rod

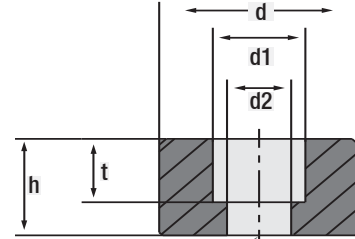
Code: G16

d	L	d1	L1	L2	L3	L4	SW
10	60	M.6	10	14	21	10	8
	70						
	80						
	100						
	140						
14	60	M.8	13	16	21	10	10
	80						
	100						
	120						
	140						
16	60	M.10	16	20	21	10	12
	70						
	80						
	100						
	120						
18	100	M.10	20	26	30	10	14
	120						
	140						
	160						
	180						
20	120	M.12	24	30	40	16	14
	140						
	160						
	180						
	200						
24	120	M.12	24	30	40	16	17
	140						
	160						
	180						
	200						
34	160	M.16	34	40	50	16	24
	200						
	240						
	260						
	300						



Code: G117

Mounting Washer for Ejector Rod



Hex-Socket Head Cap Screw

d	h	t	d1	d2
15	10	8.4	11	6.6
22	14	11	14.5	9
36	20	13.5	17.5	11
46	25	15.5	20	14
56	32	21	26	18

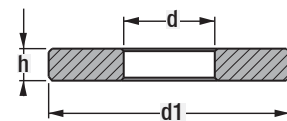


Order: G117. d x h



Code: G114

Thick Mounting Washer
Mould inner mounting washer / thick



DIN 6340

Form	d	d1	h	Weight
M6	6.4	17	3	6 gr.
M8	8.4	23	4	10 gr.
M10	10.5	28	4	16 gr.
M12	13	35	5	35 gr.
M14	15	40	5	40 gr.
M16	17	45	6	60 gr.
M18	19	45	6	60 gr.
M20	21	50	6	75 gr.



Order: G114. Form