

Code: **G108C** (steel type)

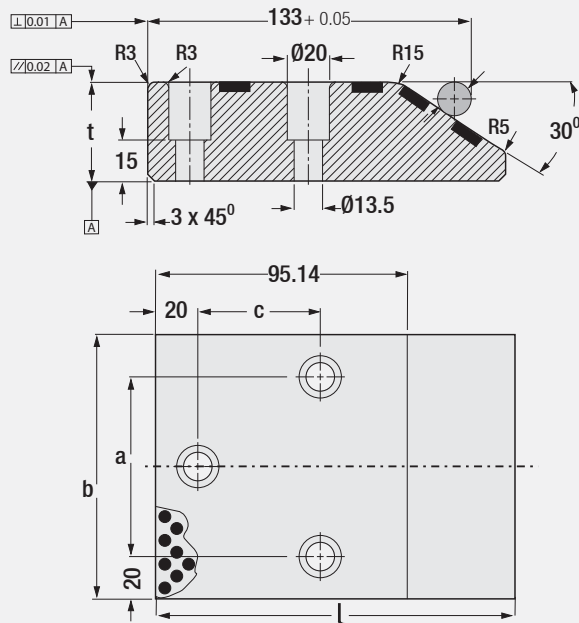
Cam Driver Plate

Code: **G108**

Self-Lub. & Steel Angular Wear Plates for Upper and Lower Body of Cam Units

Tolerance between hole distances is ± 0.25 .

± 0.25 is used for all dimensions where tolerance is not specified.



Code: **G108**

b	L	t	a	c
100	125	30	60	50
	150	45		45
	170	60		45
125	125	30	85	50
	150	45		45
	170	60		45
160	125	30	120	50
	150	45		45
	170	60		45

Order:
G108 or G108C. b x L

* The dimensions of G108 & G108C are same.
* Fixing screws: M12

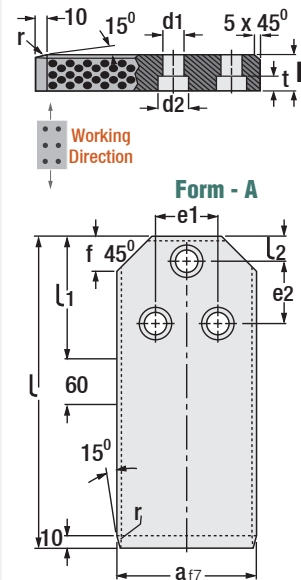


Code: **G106C** (steel type)

Guide Bar, VDI 3387

Code: **G106**

Self-Lubricating & Steel Types



Code: **G106**

a	b	L	l1	l2	e1	e2	f	r	d1	d2	t	Form
63	36	200	90	20	36	50	18	16	14	20	16	A
71												
90												
112	45	250	100	50	28	25	18	26	21	21	B	
112												
140	45	400	150	40	90	80	36	31.5	22	33	25.5	B
140												
140												
190	56	630	250	160	160	26	40	30.5	26	40	30.5	B
240												
240												

Material: Bronze with graphite inserts

Material: 1.2379
Steel Hardness: 63 - 65 HRC

Order:
G106 or G106C. a x b x L

Order Example:
G106. 140 x 45 x 400