

Code: G107

NEW

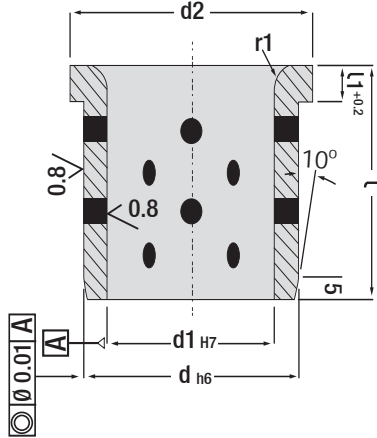
Code: G42

Guide Bush Headed, Self-Lubricating



Working
Direction

Heat Resistance:
< 150°C



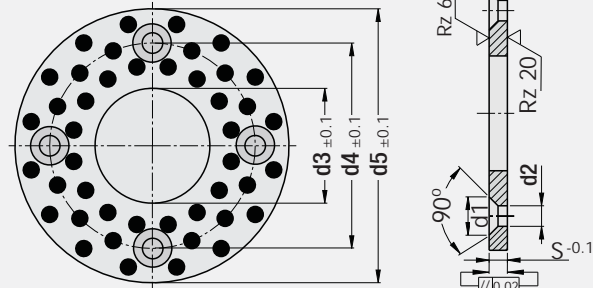
d1	l	d	d2	d6	l1	r1
20	35	28	36	G102E 40	49.4	8
25	40	32	40		53.4	8
30	55	40	50		63.4	8
32	55	40	50		63.4	8
40	70	50	60	G102E 63	73.4	8
42	70	50	60		73.4	8
50	75	63	75		95.4	12
52	75	63	75	95.4	12	8
63	80	80	90	G102E 110	110.4	12
80	100	100	110		130.4	12
100	125	125	135		155.4	12

Thrust Washer - Perforated, Self-Lubricating

In-Die & Mould Slide Systems

Heat Resistance: < 150°C

- * Spare part for in-die applications
- * Spare part in core systems etc. in injection moulds



d3	d5	d4	S	d1	d2	Hole
12.2	40	28	3	6.9	3.0	2
16.2	50	28	3	6.9	3.0	2
20.2	50	35	5	11.5	5.5	2
25.2	55	40	5	11.5	5.5	2
30.2	60	45	5	11.5	5.5	2
35.2	70	50	5	11.5	5.5	2
40.2	80	60	7	13.8	6.6	2
45.3	90	67.5	7	13.8	6.6	2
50.3	100	75	8	13.8	6.6	4
60.3	120	90	8	18.3	9.0	4
70.3	130	100	10	18.3	9.0	4
80.3	150	120	10	18.3	9.0	4

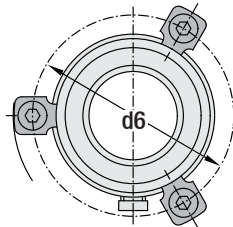
Order: G107. d3 x d5

Material: Bronze + graphite inserts

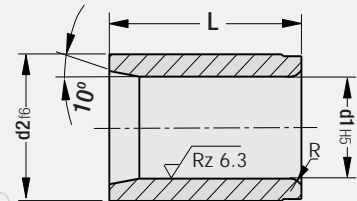
Clamping Detail



Code: G102E



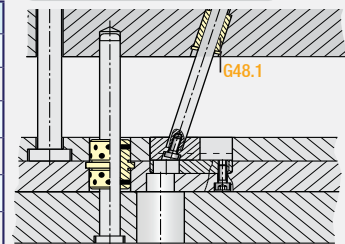
Code: G48.1



Bronze Bush - Plain

Order: G48.1 x d1 x L

d1	L	d2	R
10	14	14	1.0
10	20	14	1.0
12	20	17	1.5
12	25	17	1.5
16	25	22	2.0
16	32	22	2.0



Order: G42. d1 x l

Material: Bronze + graphite inserts



Lithium Grease - 1kg.
Self-lubricating components should be lubricated once in order to activate permanent lubricating at the first use.

Order Code: W150206