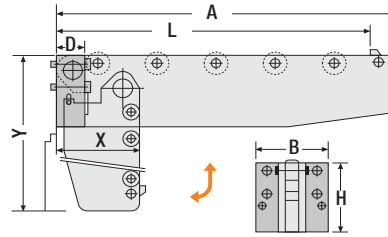
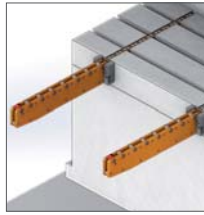


Die Rails "RD" / Vertically Foldable

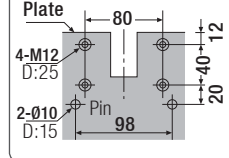
Code: 1030-RD



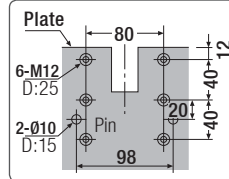
* The mounting length (Y) of type "RD" should be less than the height between bolster plate and the ground.

Order Code	L (mm)	Max. Capacity	A (mm)	Folded Dim. (mm)		Fastener (mm)			Number of Roller	Installation
				X	Y	D	B	H		
1030-RD580	500	800 Kgf	550	140	620	52	115	118	5 pcs	Method "A"
1030-RD760	700	600 Kgf	750	140	820			158	7 pcs	
1030-RD880	800	800 Kgf	850	180	960			188	8 pcs	Method "B"
1030-RD990	900	900 Kgf	950	220	1100				9 pcs	
1030-RD05125	500	1250 Kgf	550	170	645	62	130	138	7 pcs	Method "C"
1030-RD05160		1600 Kgf		190	670			158	7 pcs	
1030-RD05200		2000 Kgf		210	675			178	7 pcs	
1030-RD07125	700	1250 Kgf	750	170	840	62	130	138	9 pcs	Method "C"
1030-RD07160		1600 Kgf		190	865			158	9 pcs	
1030-RD07200		2000 Kgf		210	890			178	9 pcs	
1030-RD08125	800	1250 Kgf	850	190	960	62	130	158	10 pcs	Method "C"
1030-RD08160		1600 Kgf		210	985			178	10 pcs	
1030-RD08200		2000 Kgf		220	995			188	10 pcs	
1030-RD09160	900	1600 Kgf	950	250	1130	62	130	218	11 pcs	"C"

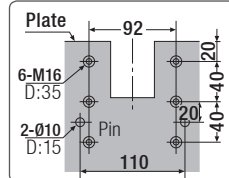
Installation Methods



Method "A"



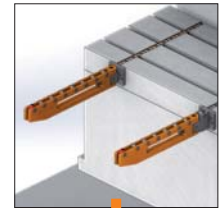
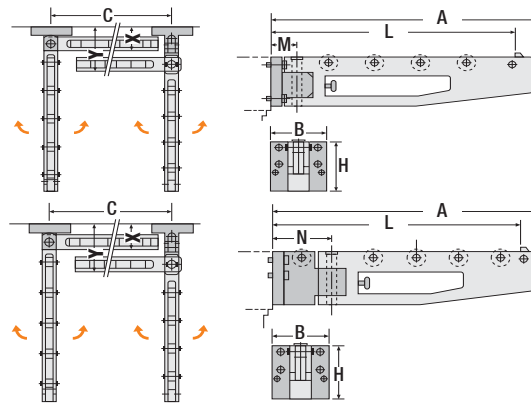
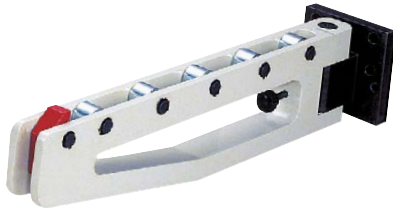
Method "B"



Method "C"

Die Rails "RE - RF" / Foldable

Code: 1033-RERF & 1035-RERF



* The distance for installing the two Die Rails of type RE - RF should be more than the distance between the installations "C".

* The Die Rails RE - RF can be folded to the right or left at the end of operation.

Order Code	L (mm)	Max. Capacity	A (mm)	C (mm)	Folded Dim. (mm)		Fastener (mm)		Number of Roller	M (mm)	N (mm)	Installation
					X	Y	B	H				
1033-RERF580	500	800 Kgf	550	525	90	150	115	118	5 pcs	57	120	Method "A"
1033-RERF760	700	600 Kgf	750	725				158	7 pcs			
1033-RERF880	800	800 Kgf	850	825				188	8 pcs			Method "B"
1033-RERF990	900	900 Kgf	950	925					9 pcs			
1035-RERF05160	500	1600 Kgf	550	525	105	170	130	158	7 pcs	74	140	Method "C"
1035-RERF05200		2000 Kgf						178				
1035-RERF07160	700	1600 Kgf	750	725	105	170	130	158	9 pcs	74	140	Method "C"
1035-RERF07200		2000 Kgf						178				
1035-RERF08160	800	1600 Kgf	850	825	105	170	130	178	10 pcs	74	140	Method "C"
1035-RERF08200		2000 Kgf						188				
1035-RERF09160	900	1600 Kgf	950	925	105	170	130	218	11 pcs	74	140	Method "C"
1035-RERF09200		2000 Kgf						248				