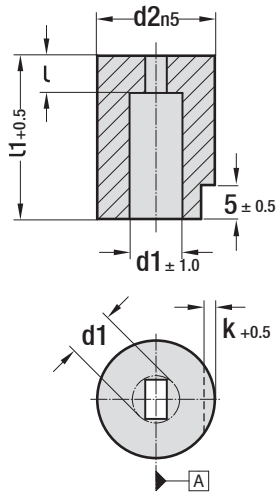


**Matrix - Straight**  
ISO 8977

Code: **MK..**



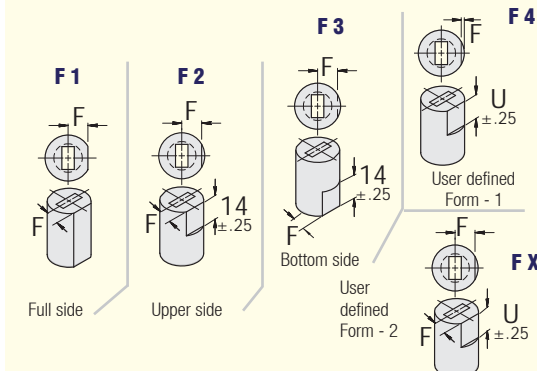
**Specification:** Diameter d1, d2 and lead-in radius ground.  
**Material:** 1.3343 (M2) **Hardness:** 60 - 62 HRC  
\* d1: Size on corners "key flat" (F size) should be specified as per request.

Types: **MKY - MKO - MKK - MKD - MKA - MKM - MKX - MKP**

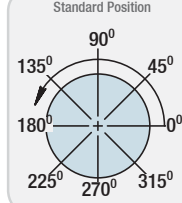
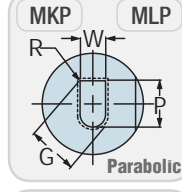
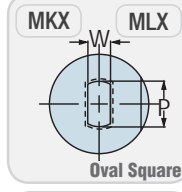
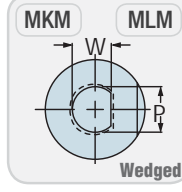
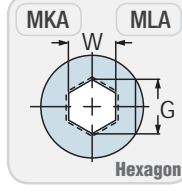
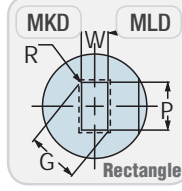
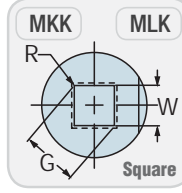
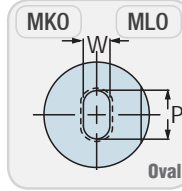
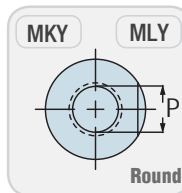
Order: **MK**(type). d2 x l1 x shape (P/W/R/G)

d1 = shape	d2	k	l	l1
1.8 ~ 3.2	8	1	3	20
2 ~ 5	10	1	3	22
3 ~ 7	13	1.5	3	25
5 ~ 8	16	1.5	5	28
7 ~ 11	20	1.5	5	30
11 ~ 16	25	2.5	5	32
16 ~ 19	32	2.5	7	35
19 ~ 28	40	2.5	7	40

**Positioning for "key flat" matrices:**

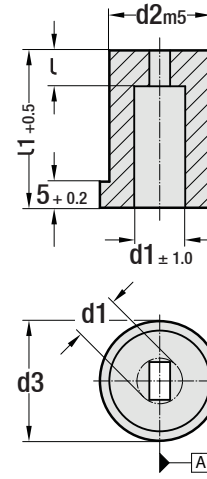


**Shapes**



**Matrix - Headed**  
ISO 8977

Code: **ML..**



**Specification:** Diameter d1, d2 and lead-in radius ground.  
**Material:** 1.3343 (M2) **Hardness:** 60 - 62 HRC  
\* d1: Size on corners "key flat" (F size) should be specified as per request.

Types: **MLY - MLO - MLK - MLD - MLA - MLM - MLX - MLP**

Order: **ML**(type). d2 x l1 x shape (P/W/R/G)

d1 = shape	d2	d3	k	l	l1
1.8 ~ 3.2	8	11	1	3	20
2 ~ 5	10	13	1	3	22
3 ~ 7	13	16	1.5	3	25
5 ~ 8	16	19	1.5	5	28
7 ~ 11	20	23	1.5	5	30
11 ~ 16	25	28	2.5	5	32
16 ~ 19	32	35	2.5	7	35
19 ~ 28	40	43	2.5	7	40

**Information for positioning:**

**Key flat matrices:** "F" size used for "F1 - F2 - F3" has been specified in drawings on the left. "FX" size is defined by the user and while ordering, "key flat" dimension "F" and "U" should be specified.

Body Diameter	"F" +0.2	Body Diameter	"F" +0.2	Body Diameter	"F" +0.2
10	4.0	32	14	63	29.5
13	5.5	38	17	71	33.5
16	7.0	40	18	76	35.5
20	8.5	45	20.5	85	40
22	9.5	50	23	90	42.5
25	11	56	26	100	47.5