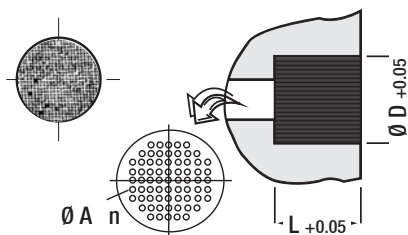


Code: SGA

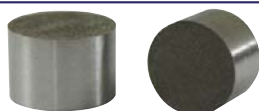
Sintered Gas Venting Filter

With its sintered & multi-pores structure, it is a special product which discharges compressed gas in injection moulds. Sintered Gas Venting Filters are used for optimum venting of the mould cavity. It is a high quality, stainless product which does not leave marks on injected objects and can resist high pressures.



D	L	A	n	D	L	A	n
1.6	5	0.03	250 / 400	6.5	10	0.05	880
2.0				9.0			
2.5				10			
3.6				12.5			
4.1	9	880	1200	15	10	0.05	880
5.0	10			20			

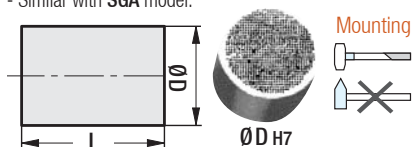
Order: SGA. D x L



Code: GVSY

Sintered Gas Venting Filter with Steel Casing

- External surface grinded.
- Sintered structure.
- Similar with SGA model.



Material: Stainless Sintered Steel

Filter Fineness: 10 Microns

Tension: 300 N / mm²

Resistance: Weak bases - Organic acids, Plastic melts - Synthetic resins

Order	D	L	Order	D	L
GVSY.04	4	10	GVSY.12	12	12
GVSY.06	6		GVSY.16	16	14
GVSY.08	8	12	GVSY.20	20	15
GVSY.10	10		GVSY.28	28	



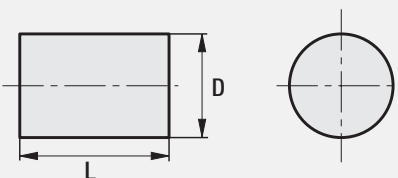
Code: GGA

Gas Venting Filter - Yellow Wired

In injection moulds, it drains unwanted gas created by melted raw material fast via wide channels. Does not resist to very high pressures, can dent and leave a mark on objects in stamp. It is mostly suitable to be used inner parts. It can be used in metal injection moulds which do not require very high temperature. **It is an economical product.**

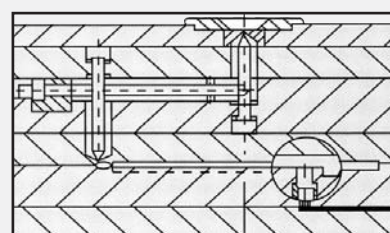
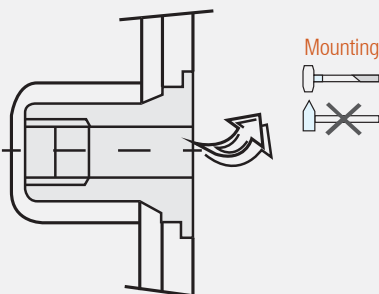
In Mounting: Please use copper / rubber hammer. Do not make any mechanic or polishing / levelling process on filter unit, since this would clog up the pores.

In Production: Never touch Venting Filters on operating moulds by hand.



Code: GGA

Order	D	L
GGA.03	3.0	8
GGA.04	4.0	10
GGA.05	5.0	10
GGA.06	6.0	10
GGA.08	8.0	10
GGA.10	10	10
GGA.12	12	10
GGA.16	16	10

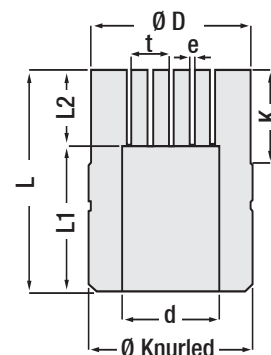
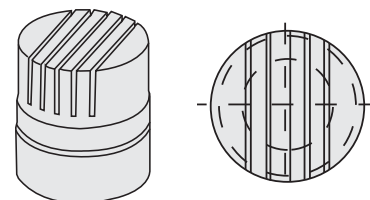


Code: STV

Air Venting Valve for Blow Moulding

It is used in blow mouldings for optimum ventilation to mould cavity. Due to the air channels of valve being parallel and wide, it drains the air in mould rapidly, also air chamber inside of the unit acts as a pool in drainage of the air. If the burrs become on the product that should be cleaned instantly. Those burrs causes adhesion to pores. For cleaning, the compressed air or cleaning spray can be used. (Güvenal Cleaning Spray Code: W170104).

Mounting: It provides tight keep and inside the safe of hole thanks to its knurled outer part.



Code: STV

Order	STV. 0610	STV. 0810	STV. 1010	STV. 1210
D	6	8	10	12
L	10	10	10	10
d	4.3	5.7	6.1	8.1
t	2.0	2.0	2.0	2.0
e	0.3	0.3	0.3	0.3
K	4.0	4.5	4.5	4.5
L1	7.0	6.5	7.0	7.0
L2	3.0	3.5	3.0	3.0
Knurled	6.1	8.1	10.1	12.1