



Die Lifting Lug - VDI 3366

Code: G134

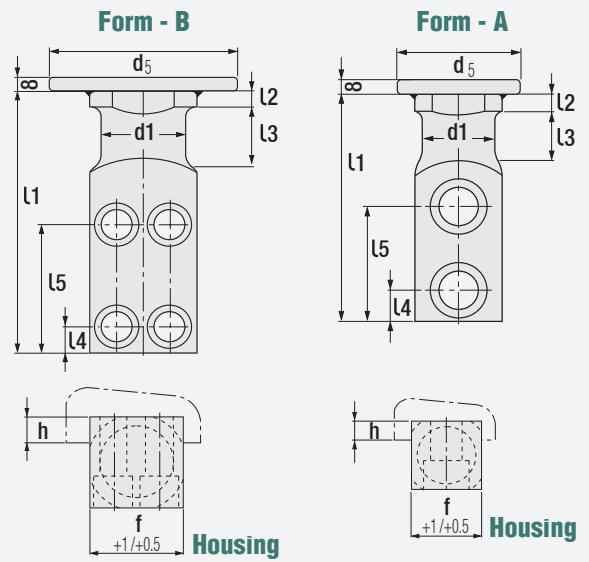
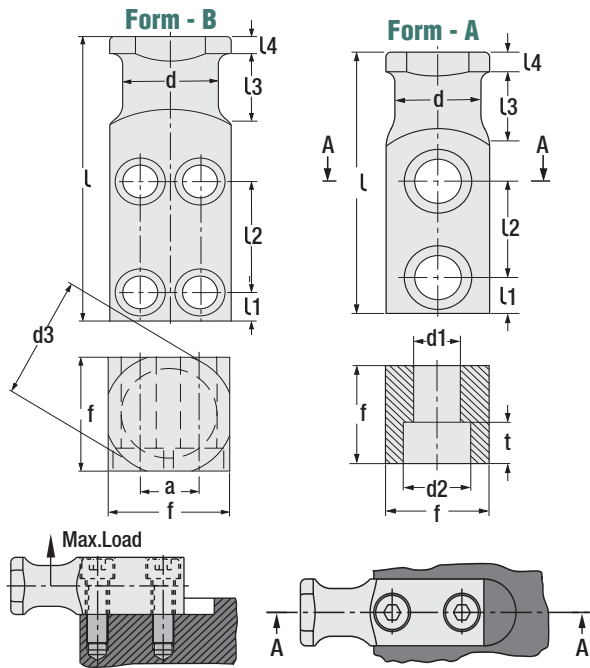


NEW



Die Lifting Lug with Rope Stop Safety

Code: G58



Code: G58

f	l	l1	l2	l3	l4	Screw	a	Form
20	80	10	34	20	6	M8 x25	-	Form A
25	90	10	37	25	8	M10 x30	-	
35	100	12	38	30	8	M12 x40	-	
40	120	16	46	32	10	M16 x45	-	
50	140	18	54	40	10	M20 x60	-	
60	160	22	59	45	12	M24 x70	-	
80	200	20	78	50	12	M20 x90	40	Form B
100	250	25	100	65	15	M24 x110	50	
120	300	30	125	80	15	M30 x130	60	

f	h	l1	l2	l3	l4	l5	Screw	Form
20	6	80	6	20	10	44	M8 x25	Form A
25	8	90	8	25	10	47	M10 x30	
35	10	100	8	30	12	50	M12 x40	
40	10	120	10	32	16	62	M16 x45	
50	12	140	10	40	18	72	M20 x60	
60	14	160	12	45	22	81	M24 x70	
80	16	200	12	50	20	98	M20 x90	Form B
100	18	250	15	65	25	125	M24 x110	
120	20	300	15	80	30	155	M30 x130	

f	d	d1	d2	d3	t	Max.Load	Max.Capacity
20	16	9.5	14.5	24	9	320 Kg.	640 Kg.
25	20	11.5	17.5	30	11	630 Kg.	1260 Kg.
35	25	14	20	40	13	1250 Kg.	2500 Kg.
40	32	18	26	50	17.5	2000 Kg.	4000 Kg.
50	40	23	33	60	21.5	3200 Kg.	6400 Kg.
60	50	27	39	70	25.5	5000 Kg.	10000 Kg.
80	63	23	33	90	21.5	8000 Kg.	16000 Kg.
100	80	27	39	110	25.5	12500 Kg.	25000 Kg.
120	100	33	48	130	32	20000 Kg.	40000 Kg.

f	d1	d5	Max.Load	Max.Capacity	Form
20	16	60	320 Kg.	640 Kg.	Form A
25	20	70	630 Kg.	1260 Kg.	
35	25	70	1250 Kg.	2500 Kg.	
40	32	110	2000 Kg.	4000 Kg.	
50	40	110	3200 Kg.	6400 Kg.	
60	50	150	5000 Kg.	10000 Kg.	
80	63	150	8000 Kg.	16000 Kg.	Form B
100	80	150	12500 Kg.	25000 Kg.	
120	100	150	20000 Kg.	40000 Kg.	

Due to safety reasons, die weight should not exceed maximum load that 2 lifting lugs can bear.

Order: G134.f

Material: CK45
700 - 800 N mm²

Order: G58.f

Material: CK45
700 - 800 N mm²

