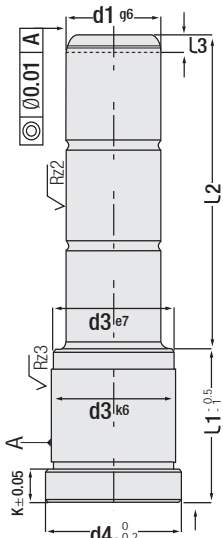


NEW



Code: G50

Guide Pillar - Shouldered



Code: G50D

(without oil groove)  
"As per request"

Code: G50  
(with oil groove)



G49

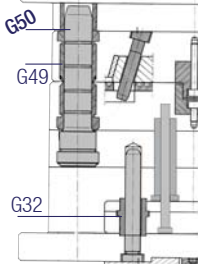


G25

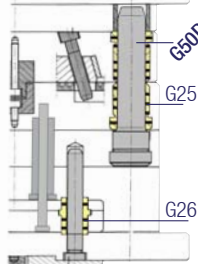
The tolerances and working space of our products are determined according to DIN 7161.

**IMPORTANT! Injection Mould:** Our guide pillars & bushes cover standard mould systems. But, guide pillar & bushes with different tolerances should be selected for aluminum injection moulds (high temperature / pressure). It should be requested from our company (production with special materials).

G50 Mounting Example



G50D Mounting Example



d1	L1	L2	d3	d4	L3	K
14	17	35	20	25	7	6
		55				
		75				
		95				
14	22	20	20	25	7	6
		35				
		40				
		45				
		50				
		55				
		65				
		70				
		90				
		110				
14	27	20	20	25	7	6
		35				
		40				
		45				
		55				
		65				
		85				
105						
14	36	20	20	25	7	6
		35				
		40				
		45				
		55				
		65				
		75				
95						
14	46	20	20	25	7	6
		35				
		45				
		65				
		85				
105						
14	56	20	20	25	7	6
		35				
		55				
		75				
14	66	55	20	25	7	6
		65				
		95				
14	76	55	20	25	7	6
		95				
14	86	55	20	25	7	6
		95				
14	96	55	20	25	7	6
		95				
14	116	75	20	25	7	6

d1	L1	L2	d3	d4	L3	K
15	17	35	20	25	7	6
		55				
		75				
		95				
15	22	20	20	25	7	6
		35				
		40				
		45				
		50				
		55				
		65				
		70				
		90				
		110				
15	27	20	20	25	7	6
		35				
		40				
		45				
		55				
		65				
		85				
105						
15	36	20	20	25	7	6
		35				
		40				
		45				
		55				
		65				
		75				
95						
15	46	20	20	25	7	6
		35				
		45				
		65				
		85				
105						
15	56	20	20	25	7	6
		35				
		55				
		75				
15	66	55	20	25	7	6
		65				
		95				
15	76	55	20	25	7	6
		95				
15	86	55	20	25	7	6
		95				
15	96	55	20	25	7	6
		95				
15	116	75	20	25	7	6

d1	L1	L2	d3	d4	L3	K
18	17	35	26	31	7	6
		55				
		75				
		95				
18	22	20	26	31	7	6
		35				
		40				
		45				
		50				
		55				
		60				
		65				
		70				
		80				
85						
115						
18	27	20	26	31	7	6
		35				
		40				
		45				
		50				
		55				
		60				
65						
18	36	20	26	31	7	6
		35				
		65				
		70				
		80				
105						
18	46	20	26	31	7	6
		35				
		45				
		50				
18	56	20	26	31	7	6
		35				
		65				
		70				
18	66	55	26	31	7	6
		65				
		75				
18	76	55	26	31	7	6
		95				
18	86	55	26	31	7	6
		95				
18	96	55	26	31	7	6
		95				
18	116	75	26	31	7	6

GTH guide pillars are polished with surface polishing machine at final stage of production (after grinding).

Order: G50. d1 x l1 x l2  
(G50D = without oil groove)

Material: 1.1213 (Cf53)  
Hardness: 58 - 62 HRC

To be continued on the next page

**Guide Pillar - Shouldered**

Code: **G50** (with oil groove)

Code: **G50D** (without oil groove)

d1	L1	L2	d3	d4	L3	K
18	56	20	26	31	7	6
		35				
		55				
		75				
		95				
18	66	55	26	31	7	6
		75				
		95				
18	76	55	26	31	7	6
		75				
18	86	55	26	31	7	6
		75				
18	96	55	26	31	7	6
		95				
18	116	115	26	31	7	6
18	136	135	26	31	7	6
20	17	35	26	31	7	6
		55				
		75				
		95				
20	22	20	26	31	7	6
		35				
		40				
		45				
		50				
		55				
		60				
		65				
		70				
		80				
		85				
115						
20	27	20	26	31	7	6
		35				
		40				
		45				
		50				
		55				
		60				
		65				
		70				
		80				
		85				
105						
20	36	20	26	31	7	6
		35				
		55				
		75				
		95				

d1	L1	L2	d3	d4	L3	K				
20	36	50	26	31	7	6				
		55								
		60								
		65								
		70								
		75								
		80								
20	46	85	26	31	7	6				
		105								
		135								
		165								
		20								
20	56	55	26	31	7	6				
		75								
		95								
		55					26	31	7	6
		65								
75										
85										
95										
20	66	75	26	31	7	6				
		95								
		55								
20	76	75	26	31	7	6				
		95								
		55								
20	86	75	26	31	7	6				
		95								
		55								
20	96	55	26	31	7	6				
		95								
		55								
20	116	115	26	31	7	6				
20	136	135	26	31	7	6				
22	17	55	30	35	7	6				
		75								
		35								
22	22	55	30	35	7	6				
		75								
		105								
		130								
		25								
		45								
		50								
		60								
		70								
		85								
		105								
22	27	65	30	35	7	6				
		70								
		80								
		85								
		25								
22	36	25	26	31	7	6				
		45								
		50								
		60								
		70								

d1	L1	L2	d3	d4	L3	K
22	27	105	30	35	7	6
		125				
		165				
		25				
22	36	45	30	35	7	6
		50				
		55				
		60				
		70				
		75				
		80				
22	46	80	30	35	7	6
		95				
		115				
		135				
		165				
		25				
		45				
22	56	55	30	35	7	6
		75				
		95				
		115				
		165				
		25				
		45				
22	66	75	30	35	7	6
		95				
		25				
22	76	45	30	35	7	6
		55				
		75				
		95				
		115				
22	86	75	30	35	7	6
		95				
		55				
22	96	75	30	35	7	6
		95				
		55				
22	116	115	30	35	7	6
22	155	155	30	35	7	6

d1	L1	L2	d3	d4	L3	K
22	136	135	30	35	7	6
22	156	155	30	35	7	6
24	17	35	30	35	7	6
		55				
24	22	75	30	35	7	6
		105				
		130				
24	27	25	30	35	7	6
		45				
		50				
		60				
		65				
		70				
		80				
24	36	70	30	35	7	6
		85				
		105				
		125				
		165				
		25				
		45				
24	46	70	30	35	7	6
		80				
		95				
		115				
		135				
		165				
		25				
24	56	75	30	35	7	6
		85				
		105				
		125				
		165				
		25				
		45				
24	66	45	42	47	7	6
		65				
		85				
		105				
		125				
24	76	45	42	47	7	6
		65				
		85				
		105				
		125				
24	86	45	42	47	7	6
		65				
		85				
		105				
		125				
24	96	45	42	47	7	6
		65				
		85				
		105				
		125				
24	116	45	42	47	7	6
		65				
		85				
		105				
		125				
24	136	45	42	47	7	6
		65				
		85				
		105				
		125				
24	156	45	42	47	7	6
		65				
		85				
		105				
		125				

d1	L1	L2	d3	d4	L3	K
24	66	55	30	35	7	6
		75				
24	76	75	30	35	7	6
		95				
		55				
24	86	75	30	35	7	6
		95				
		55				
24	96	75	30	35	7	6
		95				
		55				
24	116	115	30	35	7	6
24	136	135	30	35	7	6
24	156	155	30	35	7	6
30	22	75	42	47	7	6
		130				
		45				
30	27	65	42	47	7	6
		105				
		165				
		25				
		45				
30	36	95	42	47	7	6
		115				
		155				
		25				
		45				
30	46	85	42	47	7	6
		105				
		125				
		165				
		25				
30	56	95	42	47	7	6
		115				
		135				
		175				
		25				
30	66	95	42	47	7	6
		115				
		135				
		175				
		25				

GTH guide pillars are polished with surface polishing machine at final stage of production (after grinding).

Order: **G50. d1 x L1 x L2**  
(G50D = without oil groove)

Material: 1.1213 (Cf53)  
Hardness: 58 - 62 HRC



Code: **G50D**



Code: **G50**

To be continued on the next page

d1	L1	L2	d3	d4	L3	K
30	76	55	42	47	7	6
		75				
		95				
		115				
		155				
30	86	55	42	47	7	6
		75				
		95				
		115				
		155				
30	96	55	42	47	7	6
		75				
		95				
		115				
		155				
30	116	75	42	47	7	6
		115				
		155				
30	136	95	42	47	7	6
		115				
		155				
30	156	115	42	47	7	6
		155				
30	176	135	42	47	7	6
		175				
30	196	155	42	47	7	6
		195				
32	22	35	42	47	7	6
		75				
		130				
32	27	45	42	47	7	6
		65				
		105				
		165				
32	36	55	42	47	7	6
		75				
		95				
		115				
		155				
32	46	45	42	47	7	6
		65				
		85				
		105				
		125				
32	56	55	42	47	7	6
		75				
		95				
		115				
32	66	75	42	47	7	6
		95				
		115				
		135				
		175				

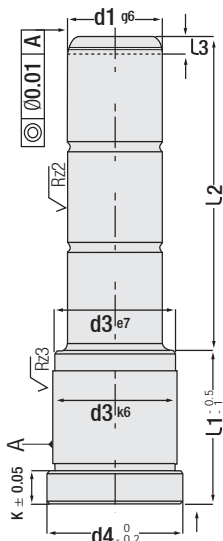
d1	L1	L2	d3	d4	L3	K
32	66	55	42	47	7	6
		75				
		95				
		115				
		135				
32	76	55	42	47	7	6
		75				
		95				
		115				
		155				
32	86	55	42	47	7	6
		75				
		95				
		115				
		155				
32	96	55	42	47	7	6
		75				
		95				
		115				
		155				
32	116	55	42	47	7	6
		75				
		95				
		115				
		155				
32	136	95	42	47	7	6
		115				
		155				
		175				
		195				
32	156	115	42	47	7	6
		155				
		175				
32	176	135	42	47	7	6
		175				
		195				
32	196	155	42	47	7	6
		195				
		215				
40	36	75	54	60	10	10
		135				
		165				
40	46	95	54	60	10	10
		135				
		165				
40	56	75	54	60	10	10
		115				
		155				
40	66	75	54	60	10	10
		115				
		155				
40	76	75	54	60	10	10
		115				
		175				
40	86	75	54	60	10	10
		135				
		175				
40	96	75	54	60	10	10
		115				
		155				

d1	L1	L2	d3	d4	L3	K
40	115	95	54	60	10	10
		135				
		195				
40	136	95	54	60	10	10
		135				
		215				
40	156	115	54	60	10	10
		155				
		215				
40	176	135	54	60	10	10
		155				
		175				
40	196	155	54	60	10	10
		195				
		235				
42	36	75	54	60	10	10
		135				
		165				
42	46	95	54	60	10	10
		135				
		165				
42	56	75	54	60	10	10
		115				
		155				
42	66	75	54	60	10	10
		135				
		175				
42	76	115	54	60	10	10
		135				
		175				
42	86	75	54	60	10	10
		135				
		195				
42	96	75	54	60	10	10
		115				
		155				
42	115	95	54	60	10	10
		135				
		195				
42	136	95	54	60	10	10
		135				
		215				
42	156	115	54	60	10	10
		155				
		215				
42	176	135	54	60	10	10
		155				
		175				
42	196	155	54	60	10	10
		195				
		235				
50	96	115	66	72	10	10
		135				
		155				
		175				
60	96	96	80	86	10	10
		116				
		136				
		156				
		196				



Code: G50

Guide Pillar - Shouldered



Code: G50D

(without oil groove)  
"As per request"

Code: G50  
(with oil groove)



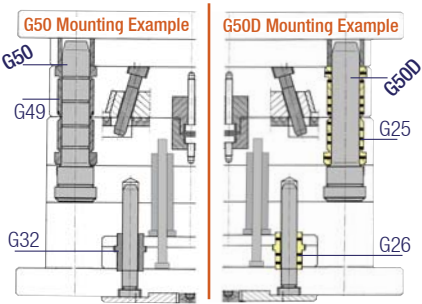
G49



G25

The tolerances and working space of our products are determined according to DIN 7161.

**IMPORTANT! Injection Mould:** Our guide pillars & bushes cover standard mould systems. But, guide pillar & bushes with different tolerances should be selected for aluminum injection moulds (high temperature / pressure). It should be requested from our company (production with special materials).



To be continued on the previous page

GTH guide pillars are polished with surface polishing machine at final stage of production (after grinding).

Order: G50. d1 x l1 x l2  
(G50D = without oil groove)

Material: 1.1213 (Cf53)  
Hardness: 58 - 62 HRC