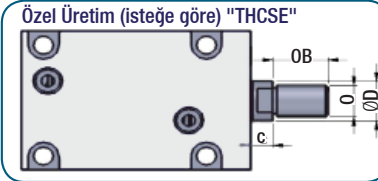
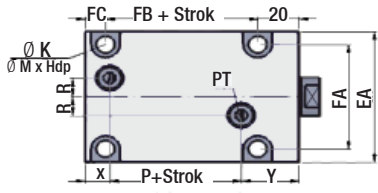
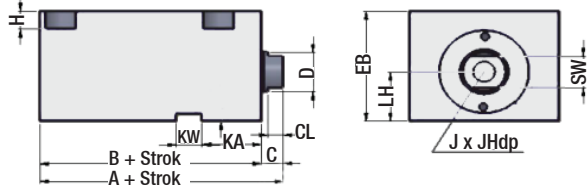
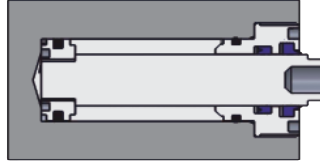
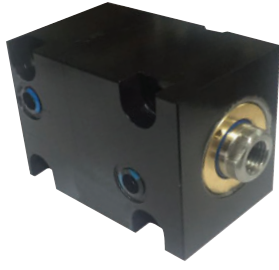


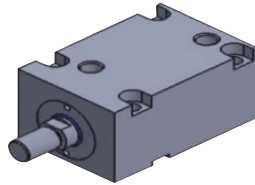
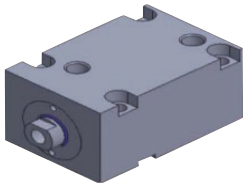
Kalıp Sistemleri  
Uygunluğunda  
(Maça / İtici)



**Çalışma:**  
Hidrolik Yağ  
**Çalışma Sıcaklığı:**  
-20 / +80°  
**Max. Çalışma Basıncı:**  
140 Bar  
**Strok Hatası:**  
± 0,3 mm  
**Mil:**  
C45 / Sert Krom Kaplı  
**Piston Borusu:**  
Sfero Döküm  
**Sızdırmazlık:**  
Poliüretan + NBR

**İçten Pistonlu Tip**  
"THCS" Serisi Ø 32 - Ø 80

**Dıştan Pistonlu Tip**  
"THCSE" Serisi Ø 32 - Ø 80



## Kare Tip Hidrolik Piston

Kod: THCS

Alt Gövde Kanallı (KW tip) & Üst Gövdeden 4-Bağlantı Delikli Model

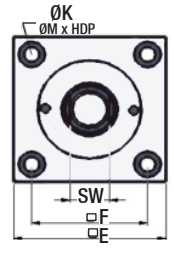
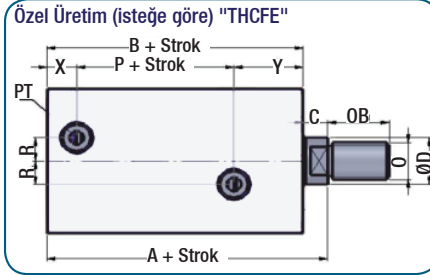
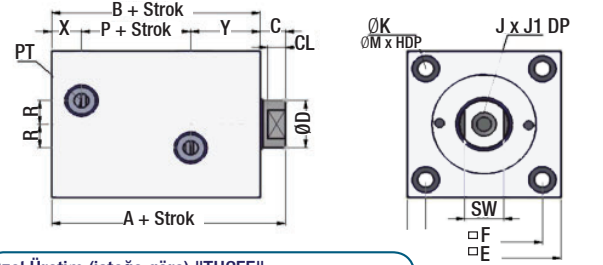
Sipariş	A	B	C	CL	D	EA	EB	FA	FB	FC
THCS.32	64	54	10	7	20	70	56	56	24	10
THCS.40	65	55			25	80	62	62	23	12
THCS.50	71	60	11	8	28	94	74	74	27	13
THCS.63	80	67	13	10	36	114	89	90	32	15

Sipariş	H	J	JH	K	KA	KW	KT	LH	M	OB
THCS.32	9	M12 x 1.75	15	9	28	12	3.5	25	14	25
THCS.40	11	M16 x 2	20	11						
THCS.50	13	M20 x 2.5	25	14	29	14	4	34	20	35
THCS.63	15	M27 x 3	35	16	31	16	4.5	42	23	40

Sipariş	O	P	PT	R	SW	X	Y
THCS.32	M16 x 1.5	14	1/4"	10	17	12	28
THCS.40	M20 x 1.5	15			22	12.5	29.5
THCS.50		18	3/8"	10	30	16	31
THCS.63	M27 x 2	20			30	16	31

Kompakt yapıda ve güçlü yataklama sistemiyle tasarlanmıştır. Dar alanlarda yüksek performans sağlarlar.

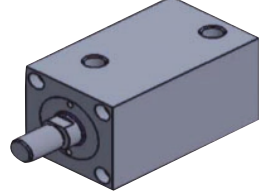
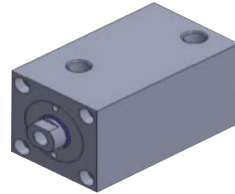
**İsteğe göre:** Aşırı sıcaklık bulunan ortamlar için özel Viton Keçeli (180°C).



**İsteğe göre:** Aşırı sıcaklık bulunan ortamlar için özel Viton Keçeli (180°C).

**İçten Pistonlu Tip**  
"THCF" Serisi Ø 32 - Ø 63

**Dıştan Pistonlu Tip**  
"THCFE" Serisi Ø 32 - Ø 63



## Kare Tip Hidrolik Piston

Kod: THCF

Kompakt Tasarımlı & Ön Taraftan 4-Bağlantı Delikli Model

Sipariş	A	B	C	CL	D	E	F	H	J
THCF.32	64	54	10	7	20	62	47	6.5	M12 x 1.75
THCF.40	65	55			25	70	52	9	M16 x 2
THCF.50	71	60	11	8	28	80	58	11	M20 x 2.5
THCF.63	80	67	13	10	36	94	69	13	M 27 x 3
THCF.80	95	78	17	14	45	114	86	15	M 30 x 3.5

J1	K	M	O	OB	P	PT	R	SW	X	Y
15	6.5	11	M16 x 1.5	25	14	1/4"	10	17	12	28
20	9	14	M20 x 1.5	30	15			22	12.5	29.5
25	11	18		M27 x 2	35	18	3/8"	15	30	16
35	14	20	M33 x 2		40	20			36	18
	16	23			45	27				

Hidrolik Silindir - Preslenmiş Hortumlar & Piston Bağlantıları Temin Edilir:

