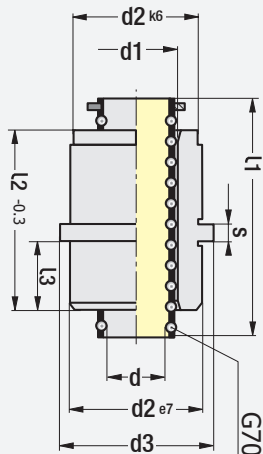




Code: **G29**

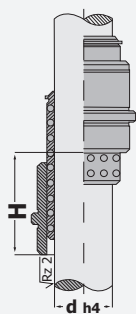
Steel Bush + Ball Cage Bush Set

It provides more precision and rapid motion at ejector plates in injection moulds.



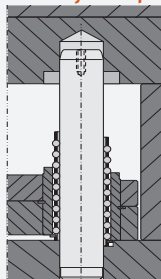
Code: **G29**

d Ø	l1 mm	l2 mm	l3 mm	d1 Ø	d2 Ø	d3 Ø	S mm	H mm
12	40	24	6	16	22	26	6	50
	56							82
18	45	34	11	24	30	35	6	44
	56							66
	71							96
30	56	54	21	38	46	52	6	32
	75							70
	95							110



more precision and rapid motion

Mounting Example



Order: **G29**. d x l1

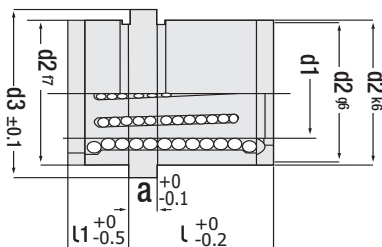
Ball Material: 1.3505 (100Cr6)

Cage: Ms58 - Steel Bush: 1.7131 (16MnCr5)



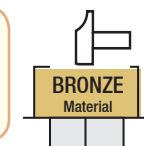
Code: **G75**

Linear Ball Bearing Bush



WARNING!

During production stage of **G74** & **G75** products ball bearings are positioned at a certain angle. Other imitation products has no angle and the balls are at a single centre.



Positioning

Pls. do not make direct fitting. Precision assembly recommended with bronze / brass.

Free stroke, rapid and limitless movement. New for ejector plate.

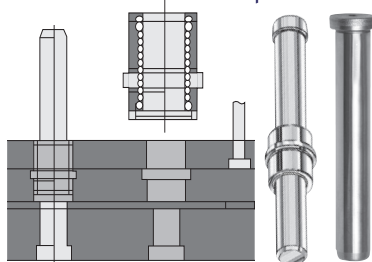
Operating Temp.: Max. 200° Code: **G75**

d1 Ø	l mm	d2 Ø	d3 Ø	a mm	l1 mm	Ball Ø
12	22	24	28	6	8	3
	26	30	34	6	9	3
20	26	32	36	6	9	3
	36					
25	26	40	45	6	10	3
	36					
30	46	48	54	8	12	4
	66					
40	46	60	66	8	12	4
	66					
50	56	70	76	10	25	4

New Linear Ball Bearing Bushes G74 / G75:

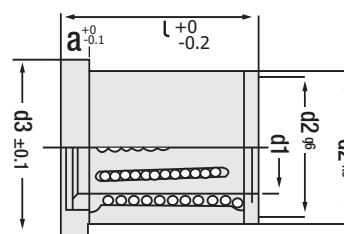
There are balls at inclined - serial - parallel intermediate channels - lines inside of linear **G74** & **G75** bushes (balls move by rotating in slot and frictionless). In this way, axial motion remains limitlessly free. Also, bearing logic is provided to the steel bush.

Compatible Pillar: **G18**



Code: **G74**

Linear Ball Bearing Bush - Headed



Balls are worked independently by rotating, they are not frictional.

Operating Temp.: Max. 200° Code: **G74**

d1 Ø	l mm	d2 Ø	d3 Ø	a mm	Ball Ø	Line Pcs.
18	35	30	34	6	3	6
	45					
20	35	32	36	6	3	6
	55					
30	45	48	54	8	4	8
	63					
40	45	60	66	8	4	8
	63					

The advantage of our new product G75 according to other similar product G29:

Extra stroke distances at unlimited axial direction and robust powerful centering is provided - free motion unlimited with low tolerance absorbs other pinking and tauting.

It is presented unlimited motion advantages with compatibility to high speeds. Linear bush **G75**: Rigidity in centering with free axial motion at long ejector systems of injection moulds - unlimited frictional motion. Linear bush **G74**: Quality control equipments - practical and reliable product for machine and mould production and device design. For maintenance and cleaning: "Güvenal Signum (order code: W160110)" spray oil is used.

Order:

G75. d1 x l | **G74**. d1 x l