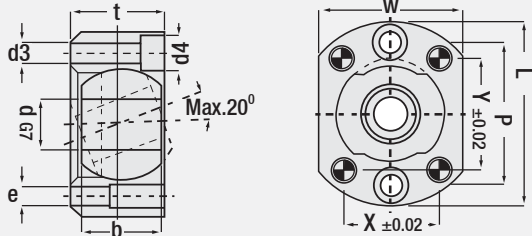




Spherical Guide Bush for Inclined Pin Code: G133K

Guide Bush unit transmitting angle motion. It offers easy installation for desired Inclined Pin design in large moulds. Angle adjustment can be done between 0° and 20°.
Max. operating temp.: 170°



Order	d	L	w	t	b	p	e	x	y	d3	d4	M
G133K.08	8	44	28	17	14	32	5	20	28	6	10	M5
G133K.10	10	46	30	20	16	34	5	22	28	6	10	M5
G133K.12	12	50	32	22	18	36	6	22	30	7	11	M6
G133K.16	16	58	45	29	25	45	6	30	35	7	11	M6
G133K.20	20	65	50	33	28	52	6	35	40	7	11	M6
G133K.25	25	78	57	38	33	62	8	40	50	9	15	M8
G133K.30	30	86	65	43	37	70	8	48	55	9	15	M8
G133K.35	35	98	72	49	40	78	8	52	60	11	18	M10
G133K.40	40	106	77	53	44	84	8	55	65	11	18	M10
G133K.45	45	118	85	57	48	96	8	59	72	11	18	M10

Inclined Pin Holder Unit Code: G133E

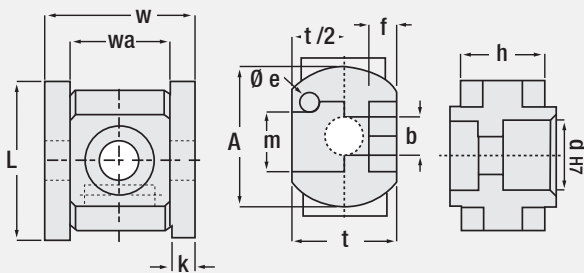


- Mountable to the ejector plate.
It is mounted by machining to ejector plate of mould.

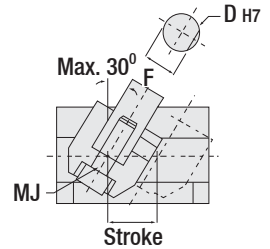
- Self-lub. system is greased up to 300° in unit.

Mat.: C45

Slide parts: Bronze + Graphite



Order	d	w	L	wa	k	h	A	t	f	m	b	e
G133E.08	8	24	25	12	6	13	20	16	5	7.5	5	3
G133E.10	10	28	32	14	7	17	20	16	4	8.5	6	3
G133E.12	12	31	40	17	7	20	25	20	5	10	7	4
G133E.16	16	36	45	21	7.5	24	30	24	6	13	9	6
G133E.20	20	43	45	28	7.5	24	40	30	8	17	11	6
G133E.25	25	48	50	33	7.5	26	45	35	9.5	22	14	6
G133E.30	30	55	60	38	8.5	30	50	38	9	27	14	6
G133E.35	35	64	70	44	10	34	55	40	10	31	14	8
G133E.40	40	72	80	50	11	38	60	43	11.5	36	18	8



Inclined Ejector Pin Unit Code: G133

It moves the Inclined / Angle Pin Systems in the desired angle.

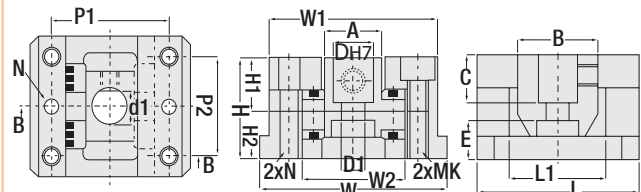
It provides important contribution to production period. The product parting from moulds with this unit is more economical compared with similar systems.

- The heat resistance of unit in mould is 300c (with self lubricating bearing system), unit can lubricate itself.

- Operating angle of ejector pin can be inclined up to 10° - 20° - 30°C.

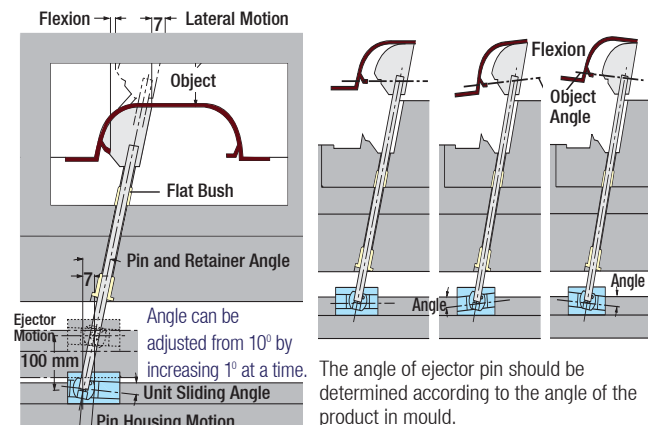
- It can be fastened to ejector plates via dowel pins and screws during mounting.

The position of the centre block can be adjusted according to the length of pin specified. Please make this adjustment when centre block and pin are attached and removed easily. **For the precise bottom support of unit, G147 product can be used.**



Order	D	d1	D1	A	B	C	E	F	MJ
G133.08	8	7	4.5	11	20	8	10	7	M4
G133.10	10	7	5.5	15	25	10	12.5	9	M5
G133.12	12	10	7	17	25	12	15	11	M6
G133.16	16	12	9	22	30	16	15	14.5	M8
G133.20	20	14	11	26	40	20	16	18	M10
G133.25	25	16	14	32	45	25	17	22.5	M12
G133.30	30	18	14	38	50	30	17	27	M12
G133.35	35	20	14	45	60	35	18	32	M12
G133.40	40	25	18	55	70	40	19	36	M16
G133.45	45	30	18	60	80	45	24	40	M16

H	H1	H2	L	L1	W	W1	W2	P1	P2	MK	N	Stroke
22	12.5	5	32	20	33	30	19	24	20	M3	3	10
27	15.5	5	45	25	45	40	25	32	30	M4	4	18
32	18	7	50	30	57	51	31	39	35	M6	6	20
36	20	8	65	40	65	58	38	46	40	M6	6	25
42	23	11	80	50	80	72	44	56	55	M8	8	30
50	28	15	90	55	93	85	52	66	65	M10	10	35
55	30	15	100	60	101	93	60	74	70	M10	10	40
62	35	15	120	75	120	110	70	85	80	M12	10	45
70	40	15	135	85	130	120	80	95	90	M12	10	50
80	45	15	150	95	140	130	90	105	110	M12	10	55



The angle of ejector pin should be determined according to the angle of the product in mould.