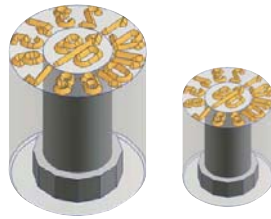


**NEW**



## Embossing Date Stamp for sheet metal

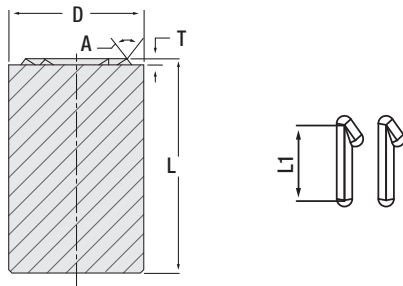
Code: **GCM09**

It is suitable to be used in all die systems. The product specifies 12 months and 1 year.

\* Please provide the desired "year" for your GCM09 orders.

The insert (inner hub) of GCM09 is a replaceable type. When you need to change the year of insert (inner hub), you can order it separately.

**Material:** 1.2379    **Hardness:** 58 - 60 HRC



Order Code	ØD	L mm	T mm	L1 mm	A mm
GMC09.08S	8	12.35	0.35	1.20	76°
GMC09.08L		19.05		1.20	
GMC09.10S	10	12.35		1.60	
GMC09.10L		19.05		1.60	
GMC09.12S	12	12.45	0.45	2.00	
GMC09.12L		19.05		2.00	
GMC09.16S	16	12.55	0.55	2.50	
GMC09.16L		19.05		2.50	
GMC09.20SA	20	12.55		3.00	
GMC09.20SB		12.55		3.50	
GMC09.20LA		19.05	3.00		
GMC09.20LB		19.05	3.50		
GMC09.24	24	24.00	0.65	4.00	
GMC09.32A	32	32.00		5.00	
GMC09.32B		32.00		6.00	

\* Please provide the desired "year" for your GCM09 orders.

Order Example:  
**GCM09.10S = "2020"**



## Die Spare Parts

### Precision machining / Custom-made

Die systems, sheet metal cutting / spinning - bending form dies, complicate dies and progressive dies. In addition, we produce your custom-made parts belonging to other die systems within technical drawing details, as precision heat treated and in desired materials with complete ground operations. Centering pins, compression and clutch plates, balancing blocks, backing and shim plates, special wedges, matrix holders, special guide shaft coupling nut, separator - holder and adjustor parts, conical centering components, special washers and inserts etc.

