



Working Direction



Working Direction

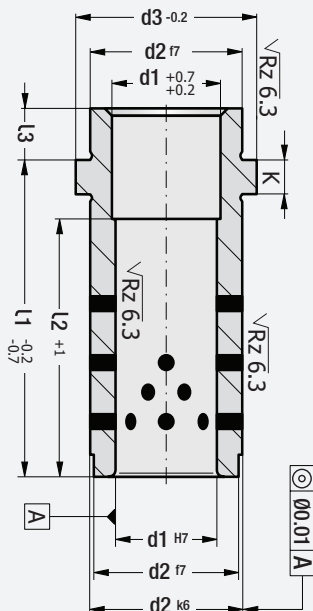


Guide Bush with Collar, Self-Lubricating Code: G27

G27 products used in injection moulds with G13D guide pillars (without oil groove). Higher stability is achieved with centering of the mould in length. This way, a long-term and precision working environment with other equipment (ejector - core etc.). H7 tolerance is recommended in guide pillar / bush systems. It is compatible with the sudden movements during working. These products are not affected by vibration / impacts.

Heat resistance: 150° c. It can even work in humid environments.

Code: G27

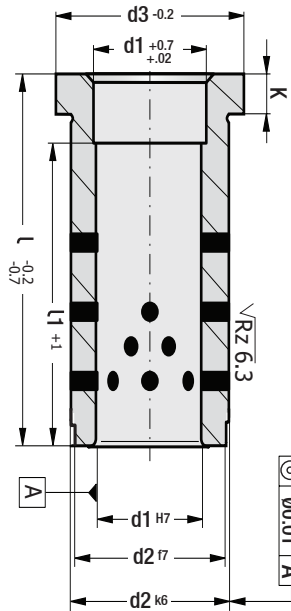


Guide Bush Headed, Self-Lubricating Code: G25

G25 products used in injection moulds with G12D guide pillars (without oil groove). H7 tolerance is recommended in guide bush systems. It is compatible with the sudden movements during working. These products are not affected by vibration / impacts.

Heat resistance: 150° C. It can even work in humid environments.

Code: G25



d1	L1	d2	d3	K	L3
14	17	20	25	6	6
	22				
	27				
	36				
	46				
15	56	l2 : > 2 - 3 x d1			
	66				
	76				
	86				
	96				
16	17	20	25	6	8
	22				
	27				
	36				
	46				
18	56	l2 : > 2 - 3 x d1			
	66				
	76				
	86				
	96				
20	17	26	31	6	8
	22				
	27				
	36				
	46				
22	56	l2 : > 2 - 3 x d1			
	66				
	76				
	86				
	96				
25	22	30	35	6	8
	27				
	36				
	46				
	56				
24	66	l2 : > 2 - 3 x d1			
	76				
	86				
	96				
	116				

d1	L1	d2	d3	K	L3
14	27	42	47	6	8
	36				
	46				
	56				
	66				
15	76	l2 : > 2 - 3 x d1			
	86				
	96				
	116				
	136				
16	46	54	60	10	12
	56				
	66				
	76				
	86				
18	96	l2 : > 2 - 3 x d1			
	116				
	136				
	156				
	196				

Sliding bushing systems provide higher stability. These products are lubricated once as a thin layer and this reduces negative effects.

 Order: G27. d1 x L1

d1	L	d2	d3	K
12	16	18	22	4
	21			
	27			
	36			
	46			
15	56	l1 : 2 - 3 x d1		
	66			
	76			
	86			
	96			
16	27	22	27	6
	36			
	46			
	56			
	66			
18	76	l1 : 2 - 3 x d1		
	86			
	96			
	116			
	136			
20	27	26	31	6
	36			
	46			
	56			
	66			
22	76	l1 : 2 - 3 x d1		
	86			
	96			
	116			
	136			
24	36	30	35	6
	46			
	56			
	66			
	76			
25	86	l1 : 2 - 3 x d1		
	96			
	116			
	136			
	156			
30	36	42	47	6
	46			
	56			
	66			
	76			
32	86	l1 : 2 - 3 x d1		
	96			
	116			
	136			
	156			

d1	L	d2	d3	K
14	36	54	60	10
	46			
	56			
	66			
	76			
15	86	l1 : 2 - 3 x d1		
	96			
	116			
	136			
	156			
16	76	66	72	10
	86			
	96			
	116			
	136			
18	156	l1 : 2 - 3 x d1		
	196			
	216			
	236			
	256			
20	96	80	86	20
	116			
	136			
	156			
	176			
22	196	l1 : 2 - 3 x d1		
	216			
	236			
	256			
	276			

 Order: G25. d1 x L

Material:
Bronze + graphite inserts