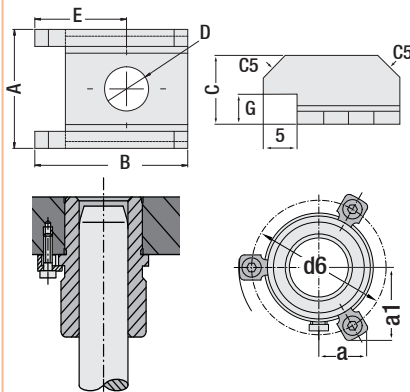




### Guide Bush Clamp Code: G101

While using for self-lubricating guide bushes and other bush components with bushes for  $\varnothing \leq 63$  2 pcs. and for  $\varnothing \geq 80$  3 pcs. clamps are used. Mounting screws are supplied separately.

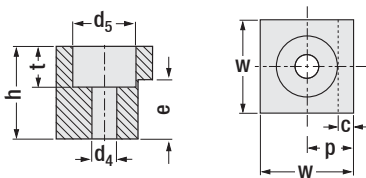


Code: G101

$\varnothing$ d Bush	A mm	B mm	C mm	D mm	E mm	G mm	Form
32 / 40 50 / 63 63 / 80 100 115	17.5	22.5	12	6.5	13.5	6	<b>A</b> M6 x 20
32 / 40 50 / 63 63 / 80 100 115 125	21	25.5	13.5	8.5	15	5.5	<b>B</b> M8 x 20

Order: G101. Form

### Bush Clamp Code: G102E



Order Example:  
G102E.40

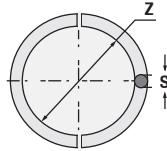
Reference: CNOMO

Bush	w	p	h	e	c	t	d <sub>4</sub>	d <sub>5</sub>
$\varnothing$ 40	18	9.5	12	8	3	7	6.6	11
$\varnothing$ 50	22	12	16	10	4	9	9	15
$\varnothing$ 63	26	15	20	12	5	11	11	18
$\varnothing$ 80	26	15	25	16	5	11	11	18
$\varnothing$ 100	26	15	32	20	5	11	11	18

### Circlip Code: G112



G02-G03-G04-G05  
G06-G07-G09-G20  
It is used with above guide pillars.



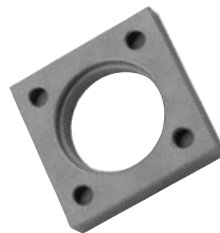
Pillar	z	s
$\varnothing$ 25	22.5	2.5
$\varnothing$ 32	28	4
$\varnothing$ 40	36	4
$\varnothing$ 50	46	4
$\varnothing$ 63	57	6
$\varnothing$ 80	74	6
$\varnothing$ 100	94	6

Order: G112. Pillar

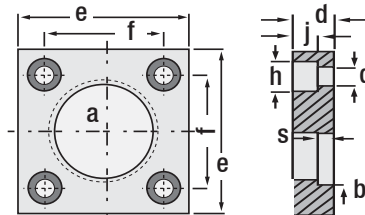
### Square Flange for Guide Pillar Code: G119

Reference: CNOMO  
Reference: PSA

Code: G119

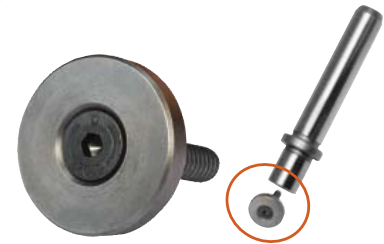


G03  
G04  
G05  
It is used with above guide pillars.

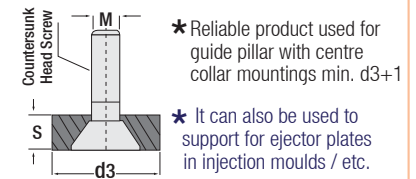
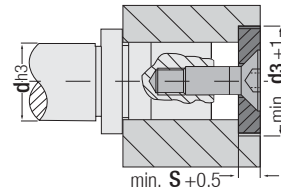


a Pillar	b	d	e	f	g	h	j	s
25	28	10	45	31	6.6	11	7	2.7
32	37	10	56	36	6.6	11	7	4.2
40	45	12	70	50	6.6	11	7	4.2
50	55	14	80	55	9	16	9	4.2
63	70	18	100	70	11	18	11	6.2
80	87	20	110	80	13	22	14	6.2
100	107	20	140	100	13	22	14	6.2

Order: G119. a (pillar)



### Mounting Flange Code: G110 Guide pillar fixation & Support washer



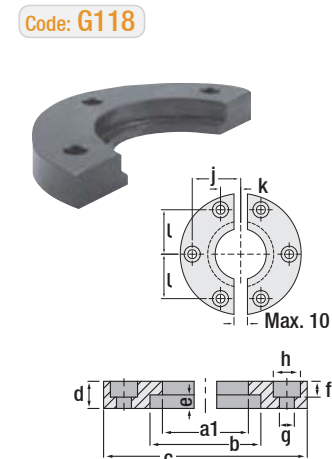
\* Reliable product used for guide pillar with centre collar mountings min. d3+1  
\* It can also be used to support for ejector plates in injection moulds / etc.

$\varnothing$ d3	Pillar Diameter d	Flange S	Screw M
22	$\varnothing$ 15 / 16	5.5 mm	M8 x 20
25	$\varnothing$ 19 / 20		
32	$\varnothing$ 24 / 25	7.5	
40	$\varnothing$ 32 / 30		
50	$\varnothing$ 38 / 40	9.5 mm	
60	$\varnothing$ 48 / 50		
73	$\varnothing$ 60 / 63	12	M12 x 20
93	$\varnothing$ 80		

Order: G110. d3

Guide pillar fixation (Die)  
Support washer (Mould)

### Bush Holder Flange Code: G118



\* For product selection and details, refer to page 40