

Diamond Tapered File Set - 5 pcs. Order Code: CF500



Set Content: Grit: #150 - #200

Length: 180 • Diamond Length: 70 • Width: 2.8 mm

Length: 180 • Diamond Length: 60 • Width: 2.5 mm

Length: 180 • Diamond Length: 60 • Width: 2.5 mm

Length: 180 • Diamond Length: 50 • Width: 2.0 mm

Length: 180 • Diamond Length: 50 • Width: 2.2 mm

Diamond Tapered File Set - 10 pcs. Order Code: PTF10T



4 different model, 10 pcs. & with extension bar.

Hand: #200 #400 #600 Grit Length: 130 mm $\begin{matrix} 2 \\ \pm 0.3 \end{matrix}$ $\begin{matrix} 1.4 \\ \pm 0.3 \end{matrix}$

Hand: #200 #400 #600 Grit Length: 130 mm $\begin{matrix} 4 \\ \pm 0.3 \end{matrix}$ $\begin{matrix} 1.4 \\ \pm 0.3 \end{matrix}$

Hand: #200 #400 #600 Grit Length: 130 mm $\begin{matrix} 6 \\ \pm 0.3 \end{matrix}$ $\begin{matrix} 1.1 \\ \pm 0.3 \end{matrix}$

Hand: #200 #400 #600 Grit Length: 130 mm $\begin{matrix} 6 \\ \pm 0.3 \end{matrix}$ $\begin{matrix} 1.1 \\ \pm 0.3 \end{matrix}$

Round: #600 Grit Length: 140 mm \varnothing 3.0 mm

Diamond Tapered File Set - 10 pcs. Order Code: PTF100



4 different model & 10 pcs.

Hand: #200 #400 #600 Grit Length: 130 mm $\begin{matrix} 2 \\ \pm 0.3 \end{matrix}$ $\begin{matrix} 1.4 \\ \pm 0.3 \end{matrix}$

Hand: #200 #400 #600 Grit Length: 130 mm $\begin{matrix} 4 \\ \pm 0.3 \end{matrix}$ $\begin{matrix} 1.4 \\ \pm 0.3 \end{matrix}$

Hand: #200 #400 #600 Grit Length: 130 mm $\begin{matrix} 6 \\ \pm 0.3 \end{matrix}$ $\begin{matrix} 1.1 \\ \pm 0.3 \end{matrix}$

Hand: #200 #400 #600 Grit Length: 130 mm $\begin{matrix} 6 \\ \pm 0.3 \end{matrix}$ $\begin{matrix} 1.1 \\ \pm 0.3 \end{matrix}$

Round: #600 Grit Length: 140 mm \varnothing 3.0 mm

Diamond Needle File Set - 10 pcs. Order Code: PFL100



Shank: \varnothing 3 • Length: 180 mm

Set Content:

Flat: #200 Grit $\begin{matrix} 5.5 \times 1.5 \text{ mm} \end{matrix}$

Half Round: #200 Grit $\begin{matrix} 5.5 \times 2.0 \text{ mm} \end{matrix}$

Round: #200 Grit \varnothing 3.0 mm

Square: #200 Grit $\begin{matrix} 2.5 \text{ mm} \end{matrix}$

Triangular: #200 Grit $\begin{matrix} 3.5 \text{ mm} \end{matrix}$

Crossing: #200 Grit $\begin{matrix} 5.5 \times 1.0 \text{ mm} \end{matrix}$

Flat: #400 Grit $\begin{matrix} 5.5 \times 0.5 \text{ mm} \end{matrix}$

Flat: #600 Grit $\begin{matrix} 5.5 \times 0.8 \text{ mm} \end{matrix}$

Round: #400 Grit \varnothing 2.0 mm

Riffler: #200 Grit $\begin{matrix} 5.5 \times 1.5 \text{ mm} \end{matrix}$

Diamond File Set - 5 pcs. Order Code: IF500



Diamond Length: 80 • Total Length: 215 mm

Set Content: Grit: #100

Round \varnothing 5.2 mm

Half Round 9.0 x 4.0 mm

Flat 11 x 4.0 mm

Triangular 8.0 mm

Square 6.0 mm

Diamond Tip File Set - 10 pcs. Order Code: FAS100T



5 different model, 10 pcs. & with extension bar. Suitable for hand-held and Air File Tools.

Set Content: $\begin{matrix} 1.0 \\ \pm 0.5 \end{matrix}$

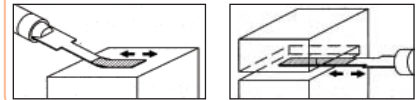
* Length: 60 • Width: 4 ~ 2 • Grit: #150 #200

* Length: 60 • Width: 4 • Grit: #150 #200

* Length: 70 • Width: 6 • Grit: #150 #200

* Length: 90 • Width: 8 • Grit: #150 #200

* Length: 90 • Width: 10 • Grit: #150 #200



Diamond Riffler File Set - 6 pcs. Order Code: BF800



Shank: \varnothing 3.0 mm • Total Length: 155 mm

Contains one riffler file each of:

Crossing, hand, round, riffler, square and triangular.

Diamond Tapered File Set - 12 pcs. Order Code: CF400



4 different model & 12 pcs.

Hand: #150 #200 #400 Grit Length: 180 mm $\begin{matrix} 2 \\ \pm 0.3 \end{matrix}$ $\begin{matrix} 2.0 \\ \pm 0.3 \end{matrix}$

Hand: #150 #200 #400 Grit Length: 180 mm $\begin{matrix} 4 \\ \pm 0.3 \end{matrix}$ $\begin{matrix} 2.0 \\ \pm 0.3 \end{matrix}$

Hand: #150 #200 #400 Grit Length: 180 mm $\begin{matrix} 6 \\ \pm 0.3 \end{matrix}$ $\begin{matrix} 2.0 \\ \pm 0.3 \end{matrix}$

Hand: #150 #200 #400 Grit Length: 180 mm $\begin{matrix} 8 \\ \pm 0.3 \end{matrix}$ $\begin{matrix} 2.0 \\ \pm 0.3 \end{matrix}$

Diamond Tapered File Set - 12 pcs. Order Code: MTF100



4 different model, 12 pcs. & for Air File Tools.

Shank: \varnothing 3 • Diamond Length: 15 mm

#200 #400 #600 Grit Length: 72 mm $\begin{matrix} 3 \\ \pm 0.3 \end{matrix}$ $\begin{matrix} 1.4 \\ \pm 0.3 \end{matrix}$

#200 #400 #600 Grit Length: 72 mm $\begin{matrix} 6 \\ \pm 0.3 \end{matrix}$ $\begin{matrix} 1.1 \\ \pm 0.3 \end{matrix}$

#200 #400 #600 Grit Length: 56 mm $\begin{matrix} 3 \\ \pm 0.3 \end{matrix}$ $\begin{matrix} 1.4 \\ \pm 0.3 \end{matrix}$

#200 #400 #600 Grit Length: 56 mm $\begin{matrix} 6 \\ \pm 0.3 \end{matrix}$ $\begin{matrix} 1.1 \\ \pm 0.3 \end{matrix}$