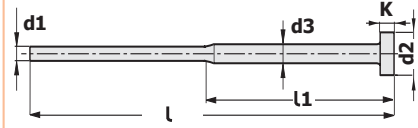




For your order of special dimensions, technical drawing can be used:

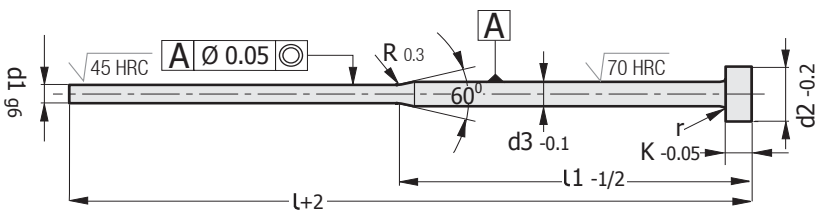


As per request / Custom-made orders.

Stepped Ejector Pin - Nitrided and Oxidation Coated ISO 8694 (DIN 1530 Form C)

Code: **SBW**

Material: 1.2343 Plasma Nitrided + Oxidation Coated
Heat Resistance with Lubricating Grease: 1400° max.
Heat Resistance: 650° max. (without lub. grease)



Code: **SBW**

d1	l	l1	d3	d2	k	r
0.8	100	50	2	4	2	0.2
	125	50				
	160	75				
0.9	100	50	2	4	2	0.2
	125	50				
	160	75				
1.0	100	50	2	4	2	0.2
	125	50				
	160	75				
	200	75				
1.1	100	50	2	4	2	0.2
	125	50				
	160	75				
1.2	100	50	2	4	2	0.2
	125	50				
	160	75				
1.3	100	50	2	4	2	0.2
	125	50				
	160	75				

d1	l	l1	d3	d2	k	r
1.4	100	50	2	4	2	0.2
	125	50				
	160	75				
1.5	100	50	3	6	3	0.3
	125	50				
	160	75				
2.0	100	50	3	6	3	0.3
	125	50				
	160	75				
	200	75				
2.5	100	50	3	6	3	0.3
	125	50				
	160	75				
	200	75				

Order: **SBW.** d1 x d3 x l1 x l

Order Example: **SBW. 2 x 3 x 75 x 160**



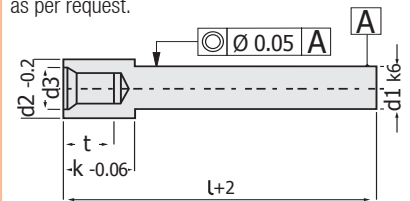
Code: **SBD**

Ejector Pin - Threaded DIN 1530 - A / ISO 6751

In-mould (ejector plate & core/lifter) usage. It has pin mounting feature without dismantling other mould parts.

Material: 1.2343 Ground and Hardened
Tensile Resistance: 1400 N / mm²

Our custom-made production is available as per request.



Code: **SBD**

d1	l	d3	t	k	d2
3	63	M4	5	10	6
	125				
4	63	M5	7	12	8
	125				
5	80	M6	9	14	9
	160				
6	80	M6	9	14	10
	160				
8	80	M6	10	16	13
	160				
10	100	M10	12	18	15
	200				
12	100	M12	14	22	18
	200				
14	100	M12	14	22	20
	200				

Order: **SBD.** d1 x l x d3