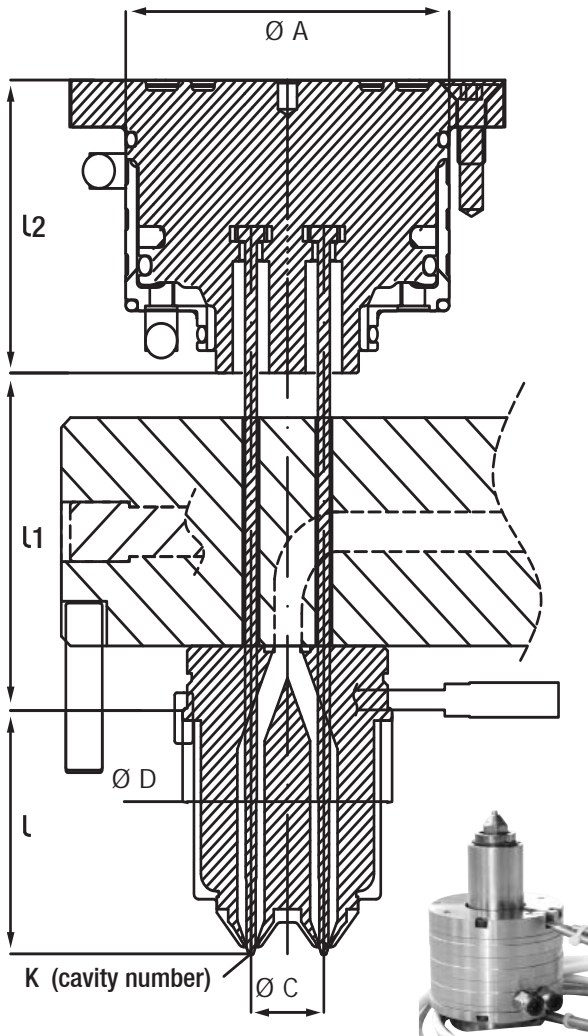


"MVG-M1"
Manifold Valve Gate - Multi Hot Runner System



"MVG-M1" Manifold Valve Gate - Multi Hot Runner System:

If mould planned to injection with multi hot runner nozzles, also if mould parameters are get over of our open gate multi hot runner nozzles (cavity dimensions, colour change, engineering raw materials and cavity quantity for each hot runner nozzle etc.), you can use Multi Valve Gate Hot Runner Systems on your moulds.

| Code | Ø D | L | Ø C | K | L1 | L2 | Ø A |
|--------|-------|--------|-------|-----|------|-------|-------|
| MVG-M1 | 46-70 | 49-109 | 16-40 | 2-8 | 67.8 | 50-55 | 72-96 |

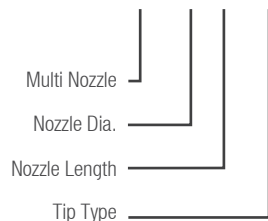
* "L1" length depends on the manifold thickness.

* Bigger axis diameters (C) increase cavity number (K).

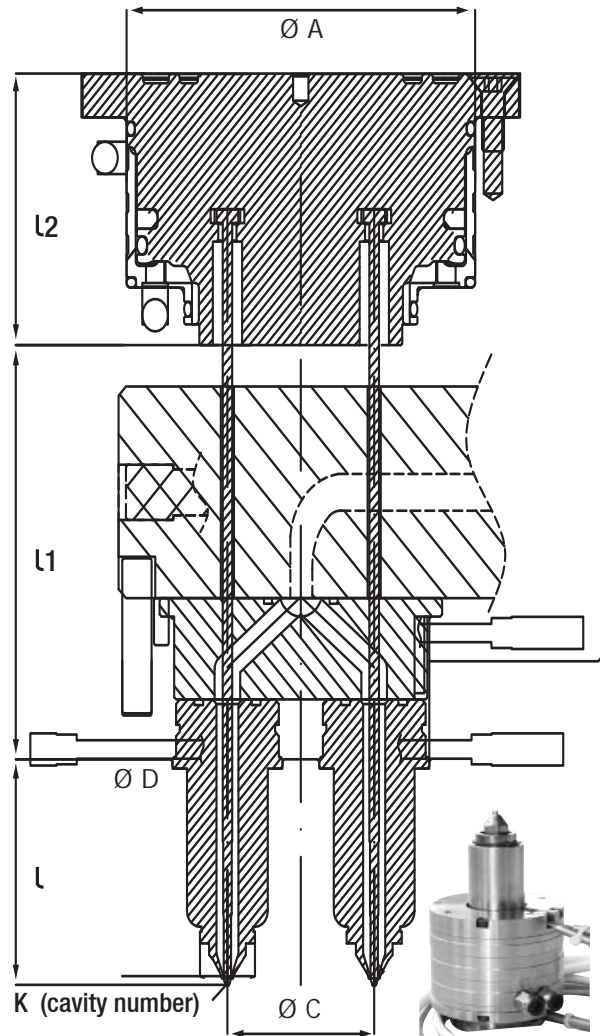
* Please check the next page for Nozzle Tip selection.

Order Example:

MVG-M1 . D . L . E04



"MVG-M2"
Manifold Valve Gate - Multi Hot Runner System



"MVG-M2" Manifold Valve Gate - Multi Hot Runner System:

If mould planned to injection with multi hot runner nozzles, also if mould parameters are get over of our open gate multi hot runner nozzles (cavity dimensions, colour change, engineering raw materials and cavity quantity for each hot runner nozzle etc.), you can use Multi Valve Gate Hot Runner Systems on your moulds.

| Code | Ø D | L | Ø C | K | L1 | L2 | Ø A |
|--------|---------|--------|---------|-----|------|-------|--------|
| MVG-M2 | 15 - 32 | 49-109 | 40 - 80 | 2-8 | 89.8 | 55-65 | 95-135 |

* "L1" length depends on the manifold thickness.

* Bigger axis diameters (C) increase cavity number (K).

* Please check the next page for Nozzle Tip selection.

Order Example:

MVG-M2 . D . L . E04

