





Standard & Reverse Number Stamping Sets	Nickel - Inox Type Sets	Standard & Reverse Letter Stamping Sets	Number & Letter Stamping Kit
--	--------------------------------	--	---

Percussive Stamps: High performance steel - precision, depth limited. Excellent CNC engraving, readable with regard to quality for very clear text view, high qualified steel casings, fully hardened handle and percussive places (markings) are chemical nickel plated and are also enabled to stamp on threaded materials. It can be used for marking of strength materials up to 2000 N / mm² and is packaged as serial in plastic box.

Standard Letter Stamping: So, the markings stamped on part can be read directly at marking with hammering.

Reverse Letter Stamping: Character stamped on die / mould is showed straight on the product (mirror image). Especially, at injection moulds.

Number & Letter Stamping Sets / Order Table



Number Set 9's Set Box "Number Size"	L (mm)		Standard Stamping	Reverse Stamping	Nickel Inox
	Dia.	Length			
1 mm Set.	6 x 6	65	Order: 14859	Order: 14889	Order: 14867
1.5 mm Set.	6 x 6	65	Order: 14860	Order: 14890	Order: 14868
2 mm Set.	6 x 6	65	Order: 14861	Order: 14891	Order: 14869
2.5 mm Set.	6 x 6	65	Order: 14862	Order: 14892	Order: 14870
3 mm Set.	6 x 6	65	Order: 14863	Order: 14893	Order: 14871
4 mm Set.	7 x 7	65	Order: 14864	Order: 14894	Order: 14872
5 mm Set.	8 x 8	65	Order: 14865	Order: 14895	Order: 14873
6 mm Set.	9 x 9	75	Order: 14866	Order: 14896	Order: 14874
8 mm Set.	11 x 11	76	Order: 14875	Order: 14897	Order: 14882
10 mm Set.	12 x 12	80	Order: 14876	Order: 14898	Order: 14883
12 mm Set.	14 x 14	80	Order: 14877	Order: 14899	Order: 14884
16 mm Set.	16 x 16	85	Order: 14879	Set in plastic box	Order: 14886
18 mm Set.	15 x 25	101	Order: 14880		Order: 14887
20 mm Set.	15 x 25	101	Order: 14881		Order: 14888



106 Pieces Letter (word formation) & Number or Date Stamping Set

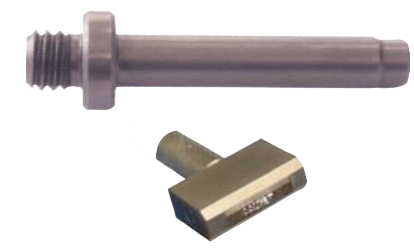
Minimum 2 pieces or maximum 3 pieces from existing letter and numbers and blank (unwritten) characters for word formation are available in set. You can write the desired work or date by marking with hammering and also by coupling to press with press mounting arbour.

Order No.	Dimension mm	Length mm	Character Qty.
14941	3	19	13 qty.
14942	4		10 qty.
14943	5		8 qty.

Letter Set 27's Set Box "Letter Size"	L (mm)		Standard Stamping	Reverse Stamping	Nickel Inox
	Dia.	Length			
1 mm Set.	6 x 6	65	Order: 14900	Order: 14930	Order: 14908
1.5 mm Set.	6 x 6	65	Order: 14901	Order: 14931	Order: 14909
2 mm Set.	6 x 6	65	Order: 14902	Order: 14932	Order: 14910
2.5 mm Set.	6 x 6	65	Order: 14903	Order: 14933	Order: 14911
3 mm Set.	6 x 6	65	Order: 14904	Order: 14934	Order: 14912
4 mm Set.	7 x 7	65	Order: 14905	Order: 14935	Order: 14913
5 mm Set.	8 x 8	65	Order: 14906	Order: 14936	Order: 14914
6 mm Set.	9 x 9	75	Order: 14907	Order: 14937	Order: 14915
8 mm Set.	11 x 11	76	Order: 14916	Order: 14938	Order: 14923
10 mm Set.	12 x 12	80	Order: 14917	Order: 14939	Order: 14924
12 mm Set.	14 x 14	80	Order: 14918	Order: 14940	Order: 14925
16 mm Set.	16 x 16	85	Order: 14920	Set in plastic box	Order: 14927
18 mm Set.	15 x 25	101	Order: 14921		Order: 14928
20 mm Set.	15 x 25	101	Order: 14922		Order: 14929

Press Mounting Arbour

It is an inserting press machine.



Order No.	Dimension mm
14944	10 x 40

Steel Letter and Number Set; can be applied to metal surfaces applicable hardness and dimensional tolerance.
"Nickel" Steel Letter and Number Set; can be applied especially to the stainless / inox surfaces.