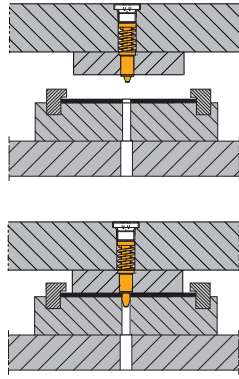


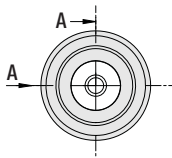
NEW



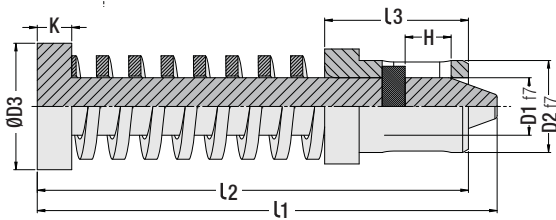
Pilot Unit

Code: **G165**

"G165" is used for centering of the moving sheet metal in progressive dies in each step. It is a compact and useful product.



1N = 0.1 daN = 0.102 kgf

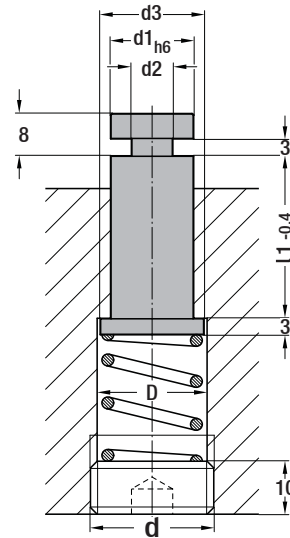


Order Code	F0 (N) preloaded	F1 (N) pressed	D1	L1	D2	D3	L2	L3	K	H
G165.05401	11	30	5	40	8	11	36	12	3	4.5
G165.05402	25	70								
G165.05403	30	84								
G165.05404	40	112								
G165.05405	55	155								
G165.05441	11	30	5	44	8	11	40	16	3	4.5
G165.05442	25	70								
G165.05443	30	84								
G165.05444	40	112								
G165.05445	55	155								
G165.08481	44	122	8	48	12	16	41	16	4	4.5
G165.08482	58	164								
G165.08483	79	220								
G165.08484	123	346								
G165.08485	165	460								
G165.08486	189	530								
G165.08521	44	122								
G165.08522	58	164								
G165.08523	79	220								
G165.08524	123	346								
G165.08525	165	460								
G165.08526	189	530								
G165.10631	140	391	9.8	63.2	15	18	53	28	4	3.5
G165.10632	245	680								
G165.10633	540	1512								



Sheet Lifting Pin

Code: **G23**



(for sheet lifting)

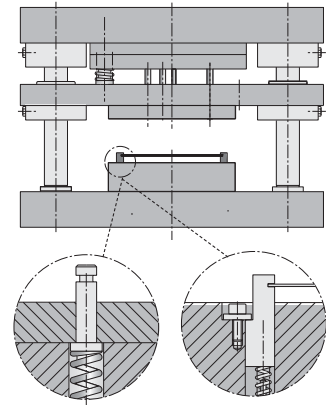
Code: **G23**

d1 h6	L1-0.4 mm	Ø d2	Ø d3	D d
8	20	5	10	M.12 x1.5
	25			
	32			
	40			
10	25	6	12	M.14 x1.5
	32			
	40			
	50			
13	25	7	16	M.18 x1.5
	32			
	40			
	50			
16	32	8	20	M.22 x1.5
	40			
	40			
	50			

Order: **G23. d1 x L1**

Material: 1.7131 (16MnCr5)
Hardness: 58-60 HRC

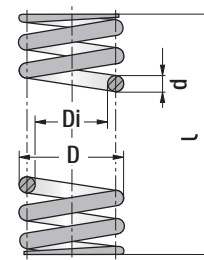
Mounting Example



It is used to align and lifting sheet in progressive / multi-stage forming dies. G145 - Compression spring set screw and round steel spring can be used for mounting.

Round Steel Spring

Code: **G23S**



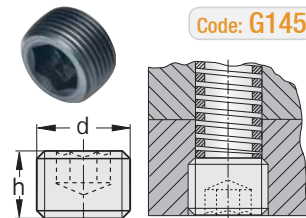
(sheet lifting spring)

D	Di	d	L
10.5	8.5	1.5	40
12.5	10.5	1.5	55
16.5	13	2	40
21	17	2.5	40

L: Spring length / die plate selection as per dimension.

Compression Spring Set Screw

Code: **G145**



d Thread	dh Hole	h Length	SW Allen
M.12 x 1.5	10.5	10	6
M.14 x 1.5	12.5	10	6
M.18 x 1.5	16.5	10	8
M.22 x 1.5	20.5	10	8