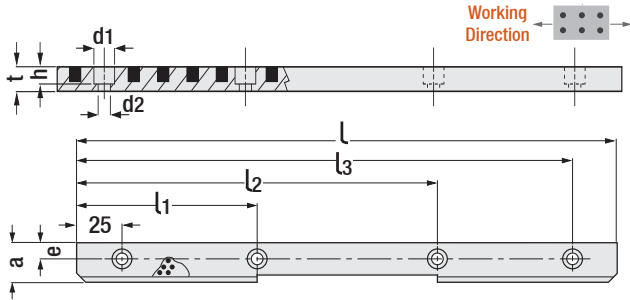




Wear Plate, Replaceable

Code: **G138**



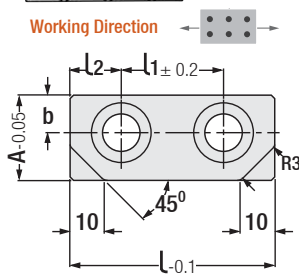
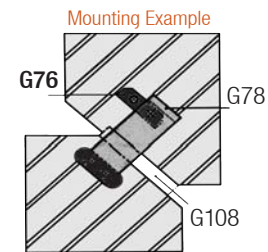
a	l	l1	l2	l3	t	h	e	d1	d2
22	100	-	-	75	10	7	9	11	6.5
	150	75	-	125					
	200	75	125	175					
	250	100	150	225					
50	300	100	200	275	12	9	22	14	9
	150	75	-	125					
	200	75	125	175					
	250	100	150	225					

Order: **G138. a x l**

Material: Bronze with graphite inserts

Return Cam Plate

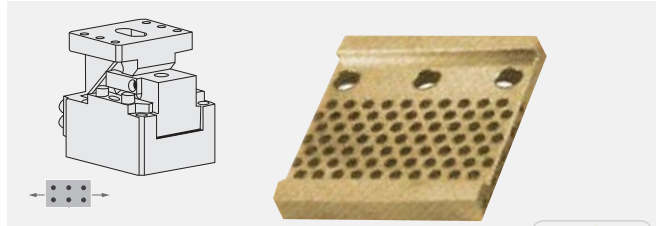
Code: **G76**



A	l	b	t	l1	l2	d	d1	h
25	60	11	30	30	15	11	17.5	18
32	60	16	38	30	15	13	20	23
32	80	16	38	40	20	13	20	23

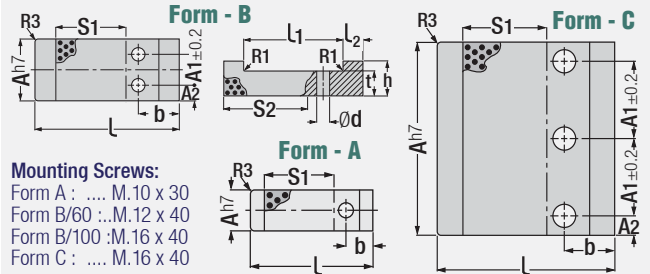
Order: **G76. A x l**

Material: Bronze with graphite inserts



Cam Plate

Code: **G137**



Mounting Screws:

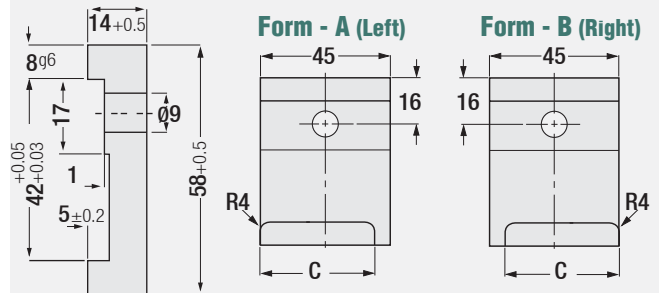
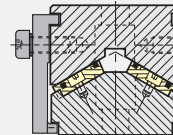
- Form A : M.10 x 30
- Form B/60 :..M.12 x 40
- Form B/100 :M.16 x 40
- Form C : M.16 x 40

Form	A	L	h	L1	L2	A1	A2	S1	S2	b	d	t
A	30	70	17	50	10	-	-	30	40	20	11	12
		90	70	50	70	50	60	20	11	15		
B	45	70	25	50	10	22	11.5	30	40	20	11	15
		90	70	50	60	40	60	40	13	25		
		120	80	20	30	15	60	80	40	18	25	
B	60	120	35	100	20	70	15	40	60	40	18	25
		140	35	100	20	70	15	60	80	40	18	25
		160	35	100	20	70	15	80	100	40	18	25
B	100	120	35	100	20	70	15	40	60	40	18	25
		140	35	100	20	70	15	60	80	40	18	25
		160	35	100	20	70	15	80	100	40	18	25
C	150	120	35	100	20	60	15	40	60	40	18	25
		140	35	100	20	60	15	60	80	40	18	25
		160	35	100	20	60	15	80	100	40	18	25
		180	35	100	20	60	15	100	120	40	18	25

Order: **G137. Form x A x l**

Positive Return Plate

Code: **G78**



* "C" dimension in the technical drawing is determined by the customer.

Form	Direction
AB	Both sides
A	Left
B	Right

Order: **G78. Form**

Material: 1.2343
Hardness: 40 - 45 HRC