

NEW



Code: **G82**

Tapered Locating Unit, Headed



Code: **G59**

Support Washer

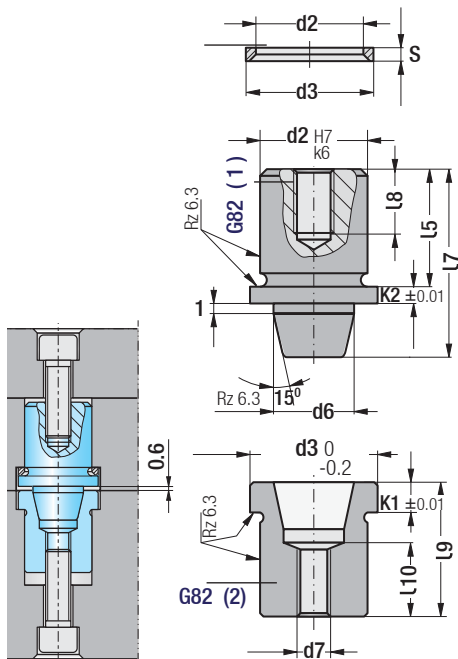


Code: **G60**

Tapered Locating Unit

Tapered Locating Units: They are used to increase speed of repeatability while providing precision centring in dies and moulds. Mounting screws are provided with products and the support washer (G59) can be provided as per request.

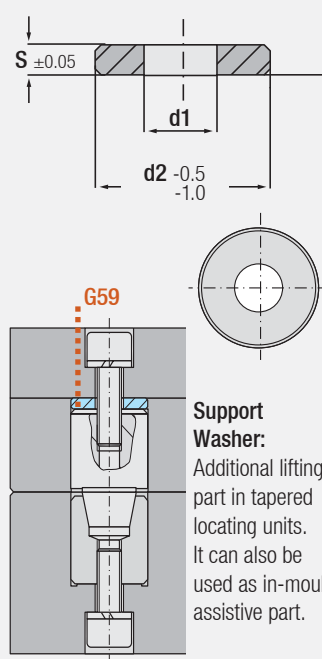
Headed Type: It is suitable to be used for centring in female and male plates in moulds (seal-rubber & blowing moulds).



Code: **G82**

d2	d3	d6	d7	K1	K2
14	17	12	M.8	4	2.5
24	28	20	M.8	6	4
34	38	30	M.8	8	5
42	46	35	M.8	8	5

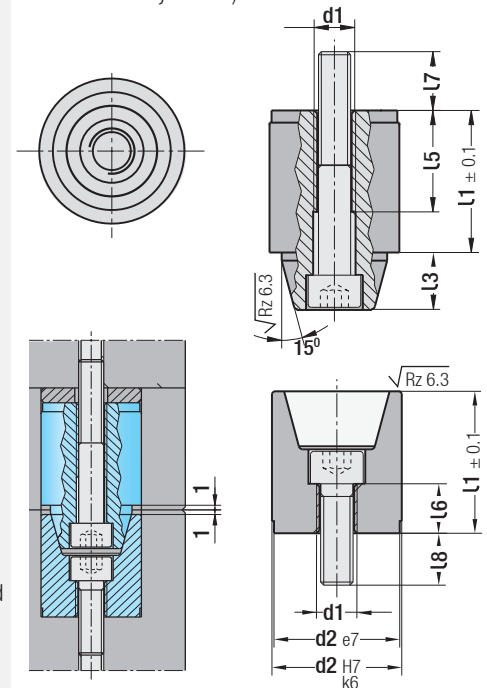
d2	l5	l7	l8	l9	l10	S
14	17	24.5	15	19.5	13	1.7
24	27	42	20	32	18	2.0
34	28	42	20	32	18	3.0
42	28	48	20	47	28	3.0



Support Washer: Additional lifting part in tapered locating units. It can also be used as in-mould assistive part.

Code: **G59**

d2	S	d1	d2	S	d1
12	5	6.5	26	5	8.5
	10				
14	5	6.5	30	5	10.5
	10				
16	5	6.5	32	5	10.5
	10				
17	5	8.5	40	5	10.5
	10				
20	5	8.5	42	5	10.5
	10				
25	5	8.5	50	5	13
	10				
	20				



Code: **G60**

d2	l1	l3	l5	l6	l7	l8	Screw d1
12	16	4.5	9.6	7	8	7.5	M4
14	16	6	12.4	6	6	6	M5
16	16	6	12.4	6	6	6	M5
20	26	9	19.7	10.5	12	9.5	M8
25	26	10	19.7	10.5	11	11	M8
30	35	14	25	11.5	15	13	M10
32	35	14	25	12.4	15	13	M10
42	45	18	27	18.5	16	13	M10

Order: **G82. d2**

Material: 1.7131 (16MnCr5)
Hardness: 60 - 62 HRC

Order: **G59. d2 x S**

Order: **G60. d2**

Material: 1.7131 (16MnCr5)
Hardness: 60 - 62 HRC

